



Argyle

Mine Closure

Updates on the
Argyle Mine Closure

Quarter 1 – 2023

RioTinto



Welcome to the first edition of the Argyle Diamond Mine Newsletter.

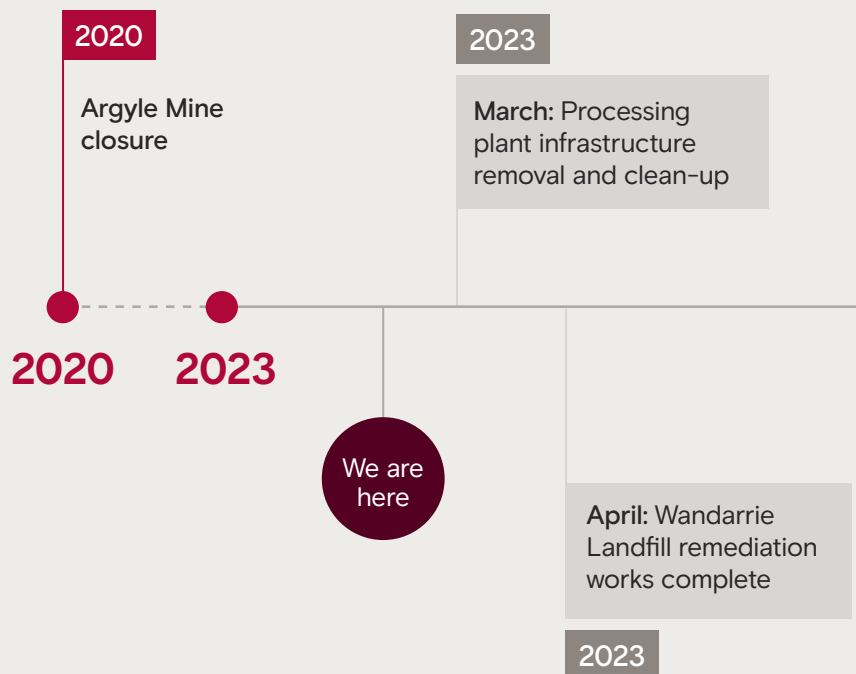
I would like to start by acknowledging the Miriwoong and Gija people from the seven Dawang/Daam groups who are the Traditional Owners of the Barramundi Dreaming. The Tiltuwam, Mandangala, Yunurr/Yalangga, Neminuwarlin, Balaburr, Bilbildjing and Upper Jimbila people.

This newsletter has been created for you and your families. We want to make sure Traditional Owners are kept up to date about what is happening with the closure of Argyle. We will be sending a newsletter out each quarter with information about Argyle closure. There is also information about jobs and business opportunities as well as contact details if you need to get in touch with us.

It is very important to us that Argyle is closed in a way that is respectful of Traditional Owners and that you are involved in the design for the closure activities. We recognise that this country is immensely significant to you and that we must take care to rehabilitate the land as best as we can before handing it back to you.

Andrew Miller
General Manager
Argyle Closure

Project milestones





2023

May: Alluvial plant
ATD5 civil works
complete

2023

September: Balance of
North-East, North-East Central,
South Central and South-East
scheduled for completion

2023

October 2023
– February 2024:
2023 revegetation season

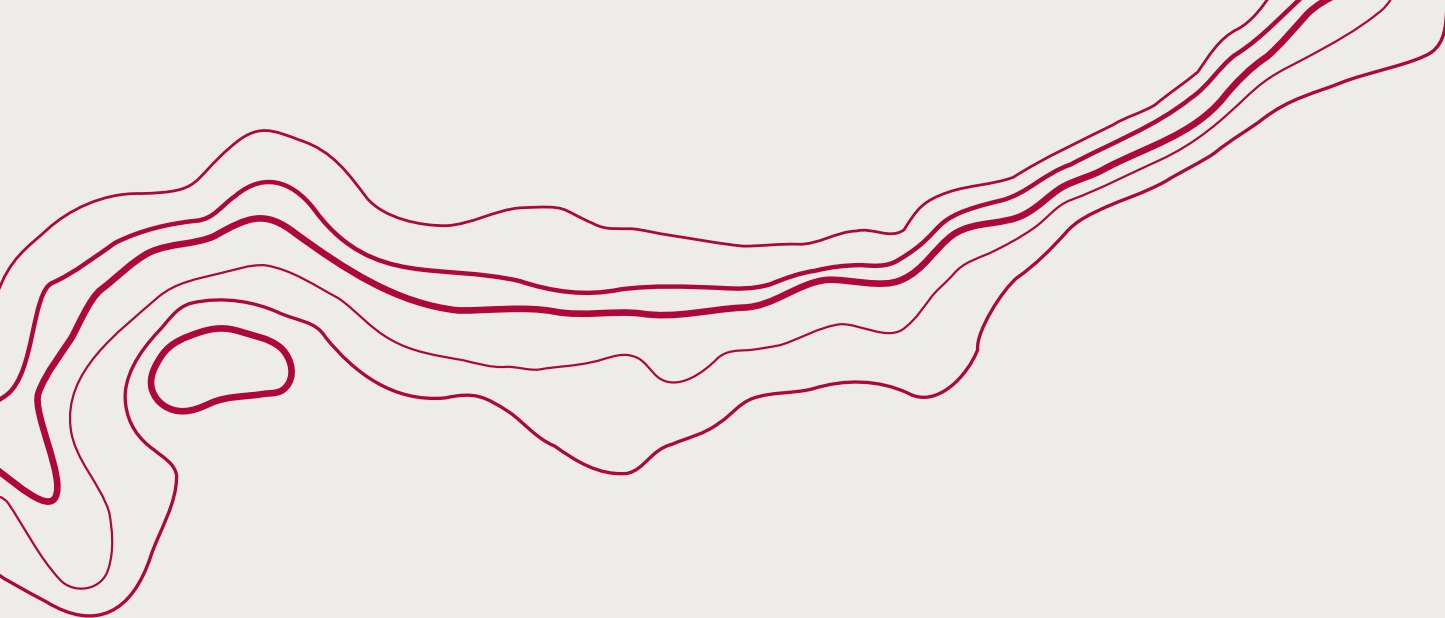
2024

August: Lake
Argyle pipeline
removal complete

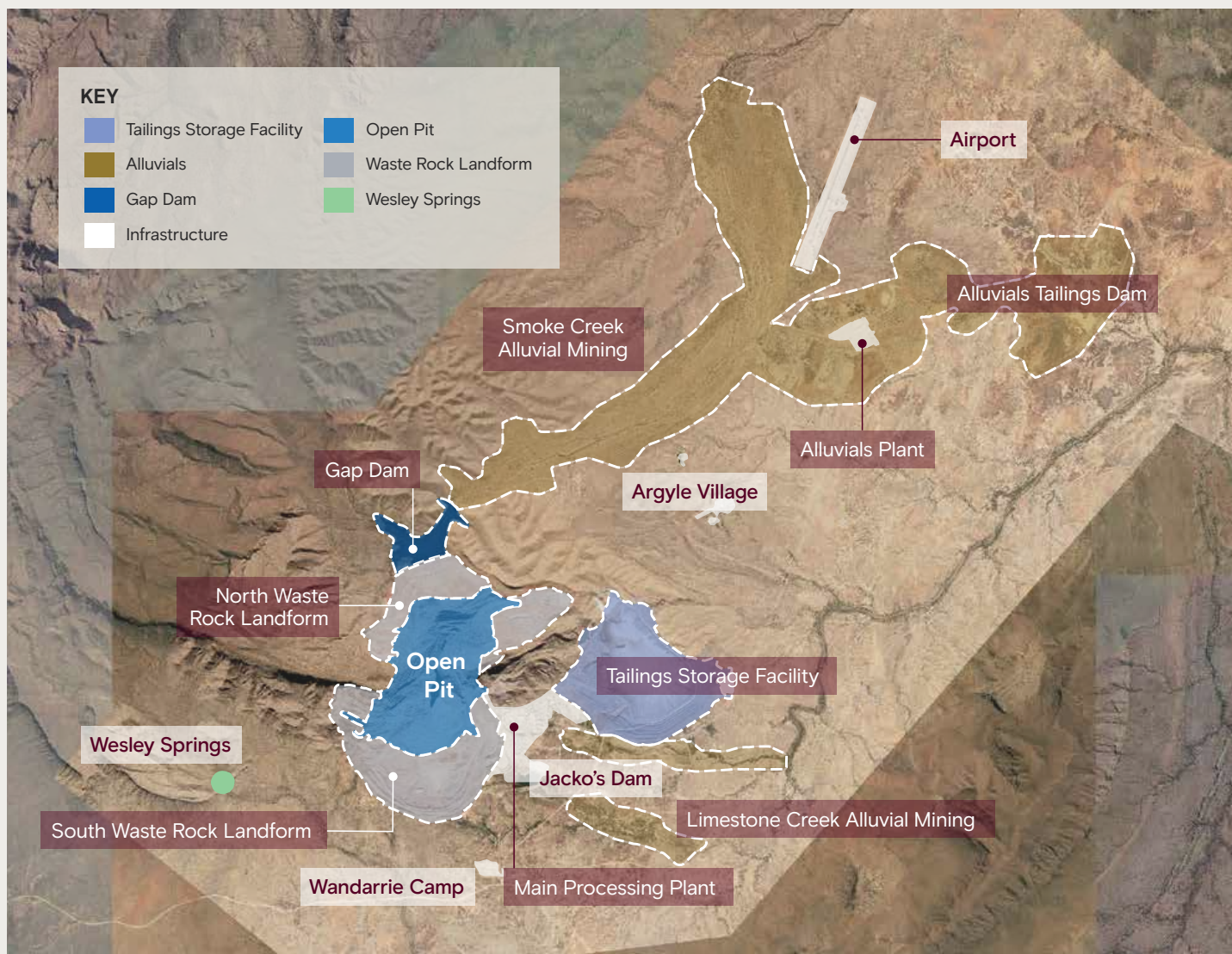
2023

October: Wandarrie
Cell C2 completed
and capped

2023



Argyle Diamond Mine Closure Work Area Domains



Project Updates

Demolition

What we've done
Q4 2022



1 Crusher removal

Completed above and belowground infrastructure of the primary and secondary crushers in December 2022.



2 Pipeline removal

Completed removal of 23.03 km duplicate raw water pipeline from Alluvial plant to Lake Argyle in January 2023.

3 Containment Cell C capping in December 2022

Containment Cell C is an onsite landfill area where materials are safely stored and capped in a way that won't allow for contamination in the future – for example, materials such as soils with hydrocarbons in them and pipes covered in bitumen. The 84m wide and 94m long cell was capped in December 2022.

4 19,000 tonnes of scrap steel was removed offsite for recycling in 2022

The steel from demolished structures have been sorted, processed and transported off site for recycling. The demolition team uses methods such as oxy cutting and shears to downsize scrap metal to allow for ease of transportation. The scrap steel is transported offsite to be recycled by an external provider.



Oxy cutting steel into smaller pieces



Shears used to cut steel

What we're doing Q1 2023

1 Site wide cleanup

In order to ensure all rubbish is removed from the process plant area, the demolition team will utilise manual picking and machine scraping over the upcoming months.

2 Continue sorting and downsizing recyclable metal

The demolition team will continue to sort and process scrap metal for transporting off site. An average of 50-70 tonnes is transported daily.

Earthworks



What we've done Q4 2022

1 Earthworks summary

We have completed around 5m³ of dirt at the waste rock dumps so far. Last year, dirt was moved in the North and South Waste Rock Dumps, AK1 Tailings Storage Facility and the Alluvial Tailings Dam areas.

72 hectares of land was prepared for the revegetation season last year.

ABOVE: Topsoil for growing plants being hauled for spreading

RIGHT: Dozer Mounted Seeding Unit completing ripping and seeding at the same time (South Waste Rock Dump)

BELOW RIGHT: Stockpiles of topsoil ready to be moved (SWRD)



2 Removal of tanks located on the West Ridge

Over the past few months, access was created to remove the tanks on top of West Ridge. The tanks were removed and rehabilitation works were carried out on the area.



What we're doing Q1 2023

1 Earth moving

Planned works for Q1 2023 include the completion of a further 52 hectares of earth moving to prepare for the 2023 rehabilitation season.

2 Bulk earthworks

Ongoing bulk earthworks in the NWRD, SWRD and TSF are also planned to progress areas towards completion.

3 Scour protection

Operation of a rock screening plant in the SWRD to produce scour protection required for spillways excavated at ATD3, ATD4 and ATD5.

4 Underdrain extension

Completion of the extension to the TSF Underdrain network, aimed at capturing and recording seepage water flows from the TSF LIA Embankment and Main Dam Embankment.

Revegetation

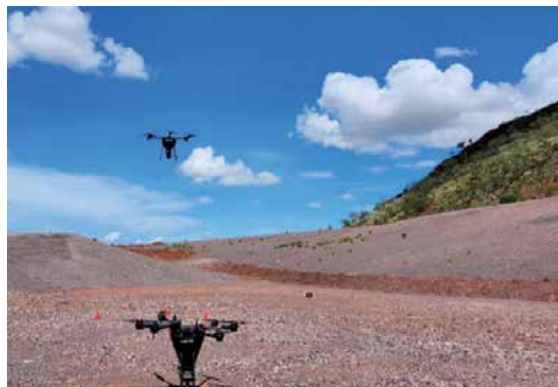
What we've done Q4 2022

1 Vegetation monitoring results

Vegetation monitoring results for the 2021 rehabilitation following 6 months of growth have shown that the rehabilitation is performing well. The next round of monitoring is planned in May 2023.

2 Drone seeding

Approximately 65 hectares of drone seeding for the 2022/23 season was completed in December and January at the north and south waste rock landforms and ATD3. In addition, 10 hectares were mechanically seeded while ripping in the waste rock landforms.





3 ATD5

ATD5 was selectively ripped around established vegetation, and fencing completed in preparation for infill planting in January. The site team used a drone to muster the Lissadell station cattle out of the fenced area, a first for the team and highly effective!

What we're doing Q1 2023

1 Infill planting

Infill planting took place at Argyle on the north waste rock landform and ATD5 from the 24th – 30th of January. Gambará, an experienced tree planting contractor, teamed up with Gelganyem Seed Operation, MDM and our Argyle Ranger team to plant 5,018 plants. The team used hand augers and a posi-track with a mechanical auger to plant species that are historically more challenging to grow from seed in our rehabilitation including Eucalyptus trees, Spinifex grass (*Triodia*), *Hakea* and *Grevillea*. The Argyle team will monitor their progress over coming months.



2 Annual flyover

As part of Argyle's monitoring program, Areometrex will be conducting its annual flyover of the Argyle mine to capture high resolution photo imagery and LIDAR (used to map structure including vegetation height and erosion gullies).

3 Weed management

Territory Weed Management are scheduled to undertake weed management at alluvial rehabilitation areas, Limestone Creek and downstream of the village and TSF.

Remediation

What we've done Q4 2022



Sampling of the pit lake water quality using a drone was completed in November 2022

The water level in the south bowl was 60 metres to the deepest point in December but remains more than 120 metres below the ground level of the Argyle offices.

What we're doing Q1 2023

2022 fish sampling event

The 2022 fish sampling event has been completed and a report on the findings has been prepared. We are now preparing for the 2023 fish sampling event.





Water Management

What we've done Q4 2022

Water monitoring results

In 2022, water monitoring continued across site including our water storage dams, Gap Dam, Jacko's Dam and Reclaim Pond 2B (RCP2B). Water quality in Gap Dam and RCP2B has been good, however Jacko's Dam, which captures seepage from the south waste rock landform, has increased in magnesium and sulphate concentrations resulting in exceedance of our operational discharge limits. The reason for the increase since closure, is that operational water is no longer being added or taken from the dam. The downstream environment of Limestone Creek is being closely monitored, but there has been no exceedance of our closure criteria downstream to indicate any impact.

We have also commenced a trial of safe water cleanser blocks from supplier Marine Easy that have been placed in Jacko's and Gap Dams to see if they can improve water quality.

What we're doing Q1 2023

Data collection

In Q1 2023, work is underway to collate the water data for annual reporting to the Department of Water and Regulation (DWER).



Rangers

What we've done Q4 2022

New Team Coordinator joins Argyle Ranger team

In December, Jeremy Manning joined the Argyle Closure team in the role of Ranger Coordinator. Jeremy has held various positions at Argyle/Rio Tinto in the past. He is a highly experienced machine operator with qualifications in land management and has spent time in the Australian Defence Force mentoring, coaching and supporting young Indigenous cadets.



What we're doing Q1 2023

1 Infill planting

Jeremy and the rangers worked together with closure and contractor teams to support the infill planting works that took place in January.

2 Argyle Ranger workshop

In mid-February, the Argyle Ranger team collaborated with the broader Argyle Closure team to define the monitoring and maintenance infrastructure to support the ongoing works on site. We will share more details on this over the next few months.



Infill planting



Feature Stories

The story behind the symbol

As we progressed into closure, Argyle asked Gelganyem to support them to commission some designs by Traditional Owners to produce a commemorative polo shirt that could be worn by the workers.

It was decided that the project should represent both Gija and Miriwoong. Accomplished artists (Evelyn) Jodie Hall and Madeline Purdie created a series of six trial artworks. These artworks have been used in the creation of two separate polo shirts, one using Madeline's design to represent Gija, and the other using Jodie's design to represent Miriwoong.

The symbol that will represent closure, is a collaborative design created from the work of both artists and tells the story of the dreaming, the country and the importance of the regeneration. The symbol begins at the top with (Evelyn) Jodie Hall's Barramundi Gap, then Madeline's 'Manthe Two-Way' in the middle and 'Barramundi Scales' at the bottom, along with Argyle's motto "Honouring Argyle's story – Closing with Pride".

The shirts are an important reminder to all the workers at Argyle that we are all part of 'one team' with the goals of closing the mine respectfully and in accordance with the wishes of Traditional Owners.

The polo shirts are currently still in design phase, but will be available to Traditional Owners once they are finalised and printed.



800kg of seed prepared for Argyle for 2022/23 season

A lot of work has gone into the revegetation of Argyle by the two seed collection teams, Gelganyem Seed Operation and Top End Seeds.

Preparing for the 2022/23 revegetation season, 800kg of seed was removed, sorted and smoked to promote germination. The team's efforts have been featured in an ABC news story.

Some highlights from the article:

- The first round of seed smoking took place recently at Gelganyem's Kununurra seed collection hub.
- The group's seed operations manager Riley Shaw said a new smoking treatment (replicating a bushfire) was being trialled to encourage seed germination.
- Approximately 100 hectares of rehabilitation would be completed this wet season, using about 800kg of seed.

Kimberley seed smoking trial underway to help rehabilitate Argyle diamond mine

ABC Kimberley / By Stephanie Sinclair
Posted Thu 26 Jan 2023 at 9:53am



Full online article can be accessed via this address:
<https://www.abc.net.au/news/2023-01-26/kimberley-seed-smoking-key-to-argyle-diamond-mine-rehabilitation/101734726>





Reminder on Argyle's zero alcohol policy

Please note that if you are driving a vehicle through the Argyle lease, you must ensure that your Blood Alcohol Concentration (BAC) is 0.00.

Those who are presenting to work, intending to drive after exiting the plane or DIDO you must ensure that your BAC is 0.00.

Random testing will take place at the airport and front gate.

Family/Traditional Owner travel update

Please note that all family and Traditional Owner travel is subject to seat availability and cannot be guaranteed due to seat availability being limited during the wet season, particularly on the Perth to Argyle leg.

All family travel for employees should be requested through the relevant company administrator and all Traditional Owner travel should be requested through enquiries. argylediamondmine@riotinto.com.

Contact us

If you'd like more information or if you have any queries about the closure, please get in touch: enquiries.argylediamondmine@riotinto.com

Nancy Davis

Specialist Communities and Social Performance Specialist

0498 124 772

Fred Martin

Advisor Communities and Social Performance

0404 450 866

Tevita Naroba

Advisor Communities and Social Performance

0488 046 249

If you are interested in employment with Argyle or any of our contract partners, please contact **Steve Sharpe** (steve.sharpe@riotinto.com).

RioTinto