



# Argyle

Mine Closure

Updates on the  
Argyle Mine Closure

Quarter 2 – 2023

**RioTinto**

Welcome to the second edition of the Argyle Diamond Mine Newsletter.

I would like to start by acknowledging the Miriwoong and Gija people from the seven Dawang/Daam groups who are the Traditional Owners of the Barramundi Dreaming – the Tiltuwam, Mandangala, Yunurr/Yalangga, Neminuwarlin, Balaburr, Bilbildjing and Upper Jimbila people.

We hope you and your families enjoyed the first edition we shared a few months ago. We want to continue keeping Traditional Owners up to date about what is happening with the closure of Argyle. There is also information about jobs and business opportunities as well as contact details if you need to get in touch with us. We will be sending a newsletter out each quarter.

After 42 years in the workforce, 30 of which in mining and 14 at Rio Tinto, I have made the decision to retire this year. Replacing me, Melissa Cundy has joined Argyle Closure from Rio Tinto Iron Ore, bringing with her a wealth of experience managing multiple, complex stakeholders to achieve positive outcomes. I have completed a detailed handover with Melissa and officially finished on the 1st of July 2023.

It is very important to us that Argyle is closed in a way that is respectful of Traditional Owners and that you are involved in the outcomes of the closure activities.

We welcome your feedback on these newsletters and will continue to share our progress towards rehabilitating this beautiful country.

Andrew Miller  
General Manager  
Argyle Closure

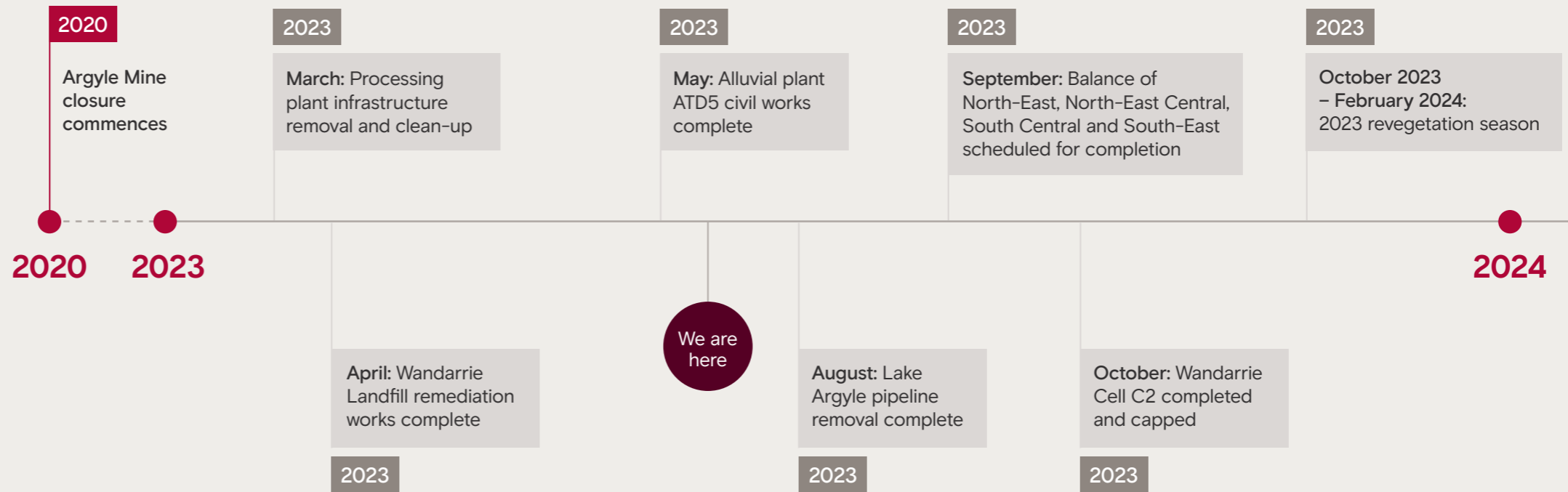


**Melissa Cundy joins Argyle Closure as General Manager**

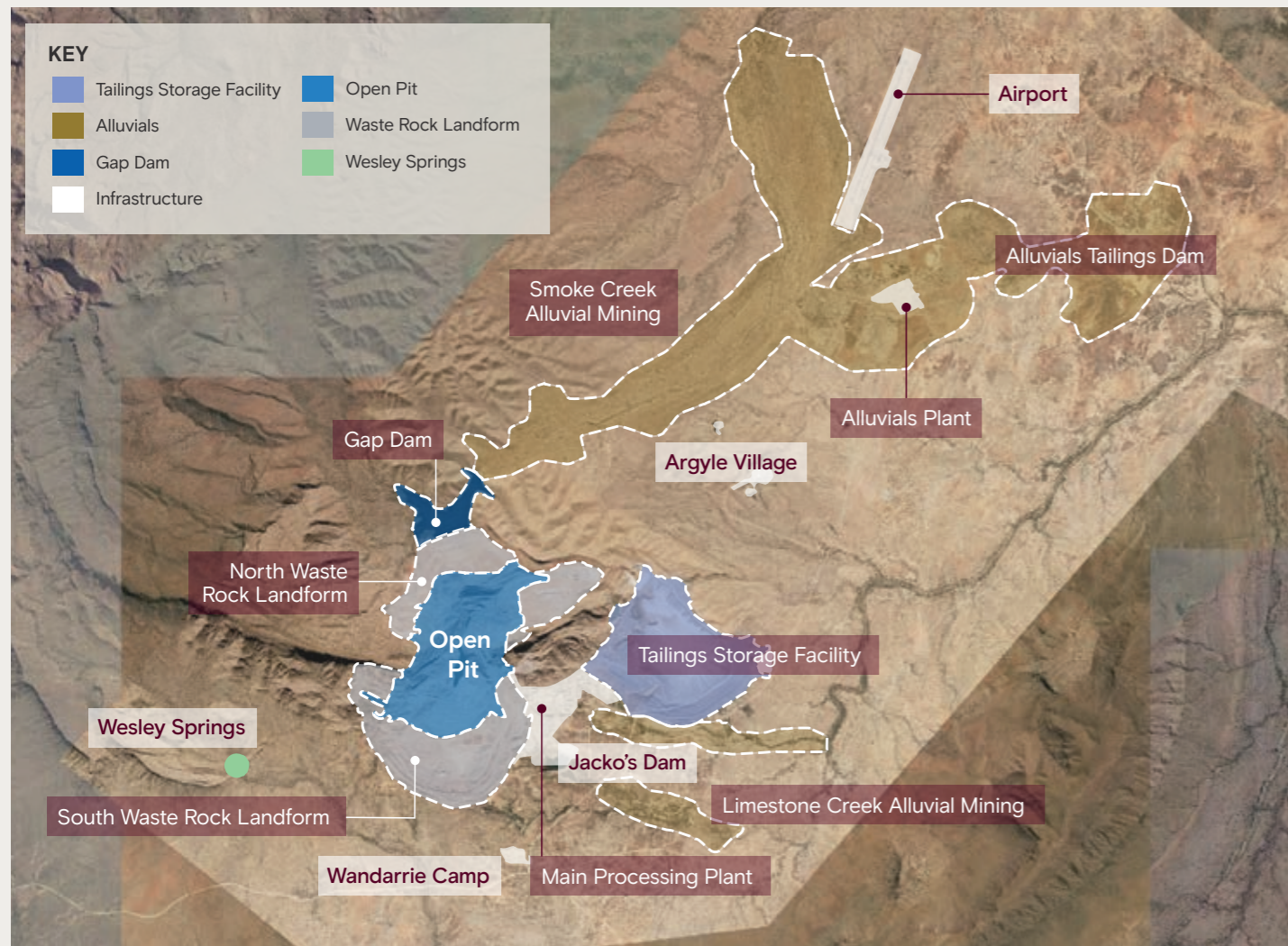
Melissa Cundy joined Argyle as General Manager Argyle Closure on 27 April. She has been spending time on site, getting to know the team along with internal and external stakeholders to ensure a smooth handover. Melissa joins us from Rio Tinto Iron Ore where she was Manager – Mining, Gudai-Darri and brings with her a wealth of experience working together with stakeholders to achieve positive outcomes.



**Project milestones**



# Argyle Diamond Mine Closure Work Area Domains



## Argyle Closure site visits for Traditional Owners

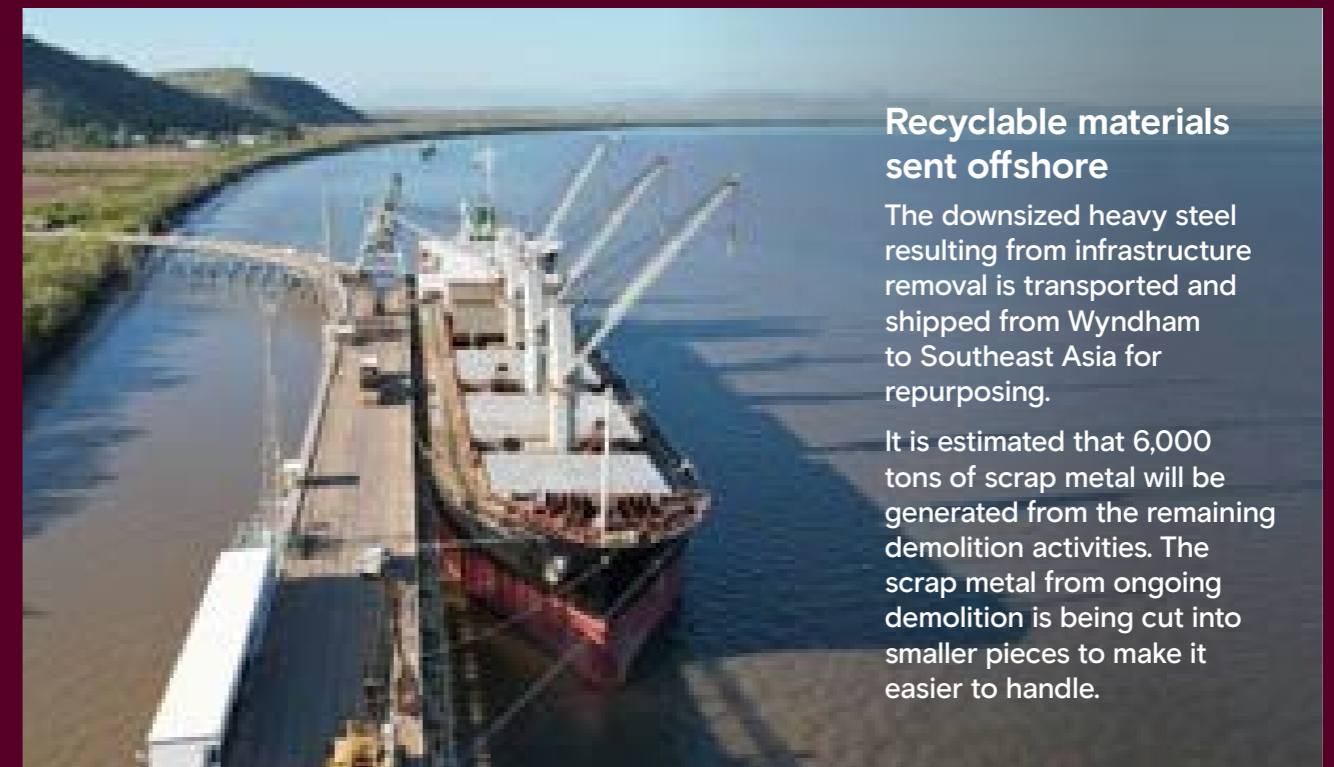
Argyle CSP and Gelganyem are working together to establish a schedule for regular site visits for Traditional Owners. The visits will cover key areas of the closure work and any other areas Traditional Owners would like to inspect. It will be an opportunity to see what is happening and give feedback on progress. Details will come out through Gelganyem this month.

# Demolition

What we've done  
Q1/Q2 2023

## Continued below ground services removal and cleaning up the processing plant area

Demolition contract partner Liberty have completed the removal of above and below ground infrastructure of the primary and secondary crushers in December 2022.



## Recyclable materials sent offshore

The downsized heavy steel resulting from infrastructure removal is transported and shipped from Wyndham to Southeast Asia for repurposing.

It is estimated that 6,000 tons of scrap metal will be generated from the remaining demolition activities. The scrap metal from ongoing demolition is being cut into smaller pieces to make it easier to handle.

# Earthworks



## Demolition works commenced in the Light Industrial Area (LIA) and Limestone Creek

The LIA consists of warehouse building, workshops, shed, Readymix plant and fire training area. All of these structures will be demolished along with any support structures such as light poles, shade structures, tanks, footpaths and sea containers. All below ground services, concrete slabs, foundation and inground structures will also be removed.

There is a recycle yard located at Limestone Creek. It was previously used as a staging and processing area for materials being recycled. Scrap metal will be stockpiled to send offsite for recycling. Any inert or non-hazardous waste will be disposed from this area.



## What we've done Q1/Q2 2023

### Access tracks on the tailings dam surface completed

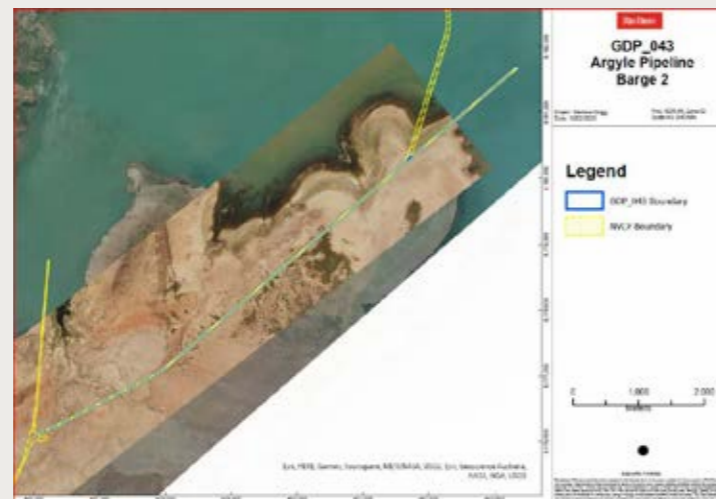
The access tracks (fingers) on the tailings dam surface have been completed and the application of the rock capping layer is in progress. Once the rock capping has been completed, a layer of nutrient rich soil will be applied on to the surface.

Following completion of the saddle dam embankment, the next step will be application of rock armouring to the slopes.

## What we're doing next

### Removal of Asbestos pipeline at Granite Valley

The remaining portion of the Lake Argyle pipeline will be removed over the next few months. These sections include the pipeline and power cable to Barge 2 as well as the offshoot to Alluvials.



### Productivity improvement and record tonnage haul from bulk earthworks contract partner Piacentini & Son

A number of improvements to production, planning and asset maintenance with the support of an external contractor led to a 16% daily increase in productivity in bulk earthworks. Halfway through April, we saw the highest volume of earth moved on site.

## Geofencing technology in earthmoving equipment to help protect the environment and cultural heritage

Traditional Owner Business, MDM have recently trialled and implemented geofencing technology for their works at the Saddleback Dam rehabilitation area; an area that borders undisturbed ground and regulatory boundaries.

Geofencing is an electronic barrier that alerts the equipment operator with an audible alarm when approaching a boundary. This technology is useful in special circumstances such as water bodies or steep slopes.

A Ground Disturbance Permit (GDP) is required for all proposed works resulting in ground disturbance as per the Argyle Diamond Mine Ground Disturbance Procedure. Ground disturbance activities can potentially impact both environmental and cultural heritage areas and are completed in consultation with key stakeholders, including Traditional Owners.

The use of the Geofencing technology prevents permit breaches as well as resulting adverse outcomes.



## What we're doing next

### Completion of Ramp 3 modifications

One of the arterial ramps at Argyle, providing access to the North Waste Rock Dump via the Tailings Dam, is currently in the process of being modified to reduce its grade to meet Rio Tinto standards. As of the end of June, the modifications are 85% complete.

*Photo - Ramp 3 gradient being modified to make it safer and to blend in more with the surrounding landscape*



## Revegetation

### What we've done Q1/Q2 2023

#### Spreading of stockpiled topsoil commenced

Our bulk earthworks team commenced spreading the stockpiled topsoil and subsoil to prepare for the upcoming revegetation season. The 2023 season has been extended to commence ripping in September to prepare for seeding in December 2023 - January 2024.



#### Weed management in May

Territory Weed Management undertook weed management works in May. The focus areas included ATD3 and ATD5 rehabilitated areas along with Rubber vine locations in Limestone Creek and alluvial mining areas.



### Annual rehabilitation monitoring completed

The annual rehabilitation monitoring was conducted from 1st - 15th of May across the 2021/22 and 2022/23 rehabilitation areas. Specialist consultants (Stantec) monitored the completed rehabilitation using remote sensing and on-the-ground survey to assess progress towards the target criteria including vegetation establishment and cover, weed coverage, erosion and evidence of fauna. The results will be shared with Gelganyem once they are available.

### Native seedlings donated to the Shire of Wyndham East Kimberley

Following the successful planting of over 5000 plants in January by Gambara, Gelganyem Seed Operation (GSO) and the Argyle Ranger Team, over 700 seedlings were remaining at the Argyle nursery. With the assistance of GSO, Argyle donated the native seedlings to the Shire to plant around Kununurra and Wyndham.



### What we're doing next Coming up in Q3 2023

#### Lease-wide weed survey

Specialist consultant (Dendra) to conduct a lease wide weed survey with a focus on disturbed areas and drainage lines. Using both drones and on-the-ground inspections by qualified botanists, the aim of the survey is to locate high risk weed species and map all weeds across the site. This biennial survey informs weed management planning and evaluates the effectiveness of treatments completed to date.



# Remediation

### What we've done Q1/Q2 2023

#### Wandarrrie Cell C2 landfill under construction

A second containment cell is currently under construction at Wandarrrie. This cell will be lined with a geosynthetic clay liner, thick plastic and a woven geotextile layer to ensure that the water cannot enter or leak from the cell. This cell will be used in the 2023 dry season to manage the remainder of the Argyle pipeline removal as well as some of the remaining contaminated soils.



### What we're doing next Coming up in Q3 2023

#### Continuing soil remediation

Soil remediation will continue in the former mining operations areas such as the fire training facility once the new containment cell at Wandarrrie is lined and ready to accept soils.

#### Landfills to be capped

Three of the historical landfills (Quarry Landfill, Bent Way Landfill, and Old Landfill) will have additional capping material placed on them to ensure that the total capping meets our design criteria. These will then be ripped and seeded.

By Q3 2023, we expect to have removed most of the current tyre and conveyor stockpiles from the site and transported them to Katherine for recycling.



# Communities

## What we've done Q1/Q2 2023

### We said goodbye to Gavin Martin

Gavin Martin, Manager Closure & Social Performance (CSP) Argyle, will leave the Argyle Closure team at the end of the month and take up a six-month secondment from July 1 with the Closure CSP Team.

### We said goodbye to Fred Martin after 20 years at Argyle

Fred Martin, who has been with Rio Tinto for 20 years, retired in March to spend more time with his family. Fred has been an important part of the Argyle Closure Communities team for 20 years and will be missed.



### Town Hall event held to update Kununurra community

In late March, the Argyle Closure team held a townhall event to update the community of Kununurra on the mine closure progress. The event provided an opportunity for town residents to learn more about how the mine is being closed in a safe manner.



### Domino Bidwee supporting the Communities Team

Argyle Ranger Domino Bidwee has been supporting the Argyle Closure Communities team during Fred's last few months. Following Fred's retirement, Domino will support the team with Traditional Owner travel, cross-culture and Manthe ceremonies and various other duties.

### First overnight cross-culture awareness training session for 2023 held in April

Argyle Closure and Gelganyem staff, along with the Head of Rio Tinto Projects, Charles Zimmermann and MD Projects Global Closures Marcia Hanrahan attended the first overnight cross-culture training for this year.

The first part of the training included a visit to Wesley Spring and the nearby jimbila site with Tiltuwam senior leader Helen Pinday. The group then went through the Gija training session at the meeting place near Wesley. In the afternoon, the team drove to Second Gorge to meet with Mandangala leader, Ted Hall. After setting up camp and a swim in Second Gorge the team set up camp there for the night. A BBQ dinner and some star watching while chatting around the fire then took place. The next morning Ted took the team through cross cultural training.

### Tailings Dam cave entrance clean up

Gelganyem staff and a group of Traditional Owners visited Argyle on 19th April to provide direction to GJC staff on removing some trees at the heritage cave near the tailings dam.

Argyle Ranger Zereth Thomas also participated in the visit. Some of the trees in front of the cave have become very overgrown. Bernadette advised GJC which trees to remove to ensure the cave is still protected but doesn't become too overgrown. Following the visit some additional heritage signage was put up on the roads around the cave to make sure no one enters those areas. Argyle will work closely with Gelganyem this year to finish off the other protection works to occur at the cave.



### Tegen Scott commences as Principal Advisor, CSP

Tegen has a keen interest in mine closure and brings a wealth of experience in community engagement, strategy and agreements across not-for-profit and mining sectors. Tegen will be working closely with Gavin Martin and the communities team to ensure a smooth handover.

## Louise Fitzpatrick commences as CSP Specialist

Louise Fitzpatrick has joined the Argyle CSP team as Specialist for Communities and Social Performance, leveraging her extensive experience in community engagement, planning, strategy, research, and development in Australia and internationally. She most recently worked at an international development consultancy.



## 25 upcoming contracting opportunities at Argyle Closure presented at a Traditional Owner Business workshop held in May

On the 16th of May, Argyle Closure held a workshop in Kununurra and presented 25 upcoming contracting opportunities to Traditional Owner Businesses as part of their commitment under Management Plan 7.

These opportunities mainly include closure work packages, such as earthworks, infill planting trials and infrastructure removal, as well as post closure monitoring and maintenance scopes of work.

The workshop also allowed Traditional Owner Business representatives to ask questions and provide feedback and input into maximising these opportunities.

# Water

## What we've done Q1/Q2 2023

### Pit Lake water monitoring completed

Pit lake water monitoring has been completed for the first quarter of 2023. Samples were collected and sent for analysis. Results will be shared with Gelganyem when available.



Image of pit lake in early April



Image of pit lake in May  
(The two bowls of water have risen and joined)

# Rangers

## What we've done Q1/Q2 2023

### Argyle - Fish Sampling Event and BBQ

The 2023 fish sampling event was successfully completed in early April with the support of contracting partners Cardno (now Stantec), and the Argyle Rangers.

The team targeted four regularly consumed fish species using rods, handlines and throw nets at popular fishing locations across the Argyle lease. A total of 17 species of fish were caught, and 109 fish samples of the target species were submitted for testing as part of our ongoing closure focused contaminated sites assessments.



Results from 3 previous sampling events have concluded that the fish are safe to eat as a part of a balanced diet over the long-term. Australian Government guidance recommends a maximum of 2-3 serves of fish per week, and the results from Argyle so far indicate that a higher number of fish could be safely eaten weekly at many of the locations at Argyle. Ongoing monitoring will continue throughout closure to confirm this over the long-term.

The Argyle Ranger team also put on a fantastic fish BBQ beneath the boab tree at Gap Dam using traditional cooking methods over open coals.



### Over 5000 native seedlings planted

The Ranger Team worked together with Gelganyem Seed Operations (GSO), Traditional Owner Business MDM and Perth based Aboriginal business Gambara to successfully plant more than 5000 plants at Argyle.

GSO worked with nursery suppliers to grow the seedlings from seed collected within 200 km of the Argyle mine.

The Argyle Closure environment team will monitor the success of the seedlings over the upcoming months.





## Employment opportunities at Argyle Closure

Company	Position
Piacentini & Son (Bulk Earthworks)	Operators positions: <ul style="list-style-type: none"><li>• 5x Dozer – D6 through to D11</li><li>• 4 x 777 rigid trucks, Water cart – 745 Cat artic and 777 rigid or similar</li><li>• 1 x grader operator for 16M and 16H</li><li>• Trainee truck drivers</li></ul>
Sodexo (Site services)	Service attendant/Handyman

If you are interested in employment with Argyle or any of our contract partners, please contact Steve Sharpe: [steve.sharpe@riotinto.com](mailto:steve.sharpe@riotinto.com)

## Contact us

If you'd like more information or if you have any queries about the closure, please get in touch: [enquiries.argylediamondmine@riotinto.com](mailto:enquiries.argylediamondmine@riotinto.com)