



# Argyle

Mine Closure

Updates on the  
Argyle Mine Closure

Issue 5

**RioTinto**

## Welcome to the fifth edition of the Argyle Diamond Mine Newsletter

I would like to start by acknowledging the Miriwoong and Gija people from the seven Dawang/Daam groups who are the Traditional Owners of the Barramundi Dreaming – the Tiltuwam, Mandangala, Yunurr, Neminuwarlin, Balaburr, Bilbildjing and Upper Jimbila people.

In April, we held the first of the overnight cross-culture courses for 2024 at Wesley Springs and Second Gorge led by Gija elder Helen Pinday and Miriwoong elder Ted Hall respectively. It was great to have Kellie Parker (Chief Executive Australia), Brian Pontifex (Head of Government Relations Asia-Pacific) and Evan Westgarth (Head of ER and GM CEO Australia) join us for this inspiring and culturally informative experience. Thanks go out to everyone who organised this session and for everyone who participated.

On the workfronts, it's fantastic to see the progress of our reprofiling activities across site with the shape of the TSF and south waste rock landform slopes starting to blend more naturally with the surrounding landscape. It's also exciting to see the plant growth from the 2023/24 seeding season.



**Melissa Cundy**  
General Manager  
Argyle Closure

## 2024 Milestones





2024

May:  
Commencement of  
completion camp  
earthwork pad

2024

August:  
Commencement of  
completion camp  
construction

2024

December:  
TSF west  
completion



2025

May:  
2024 GM spreading  
commencement

We are here

November:  
End of completion  
camp construction

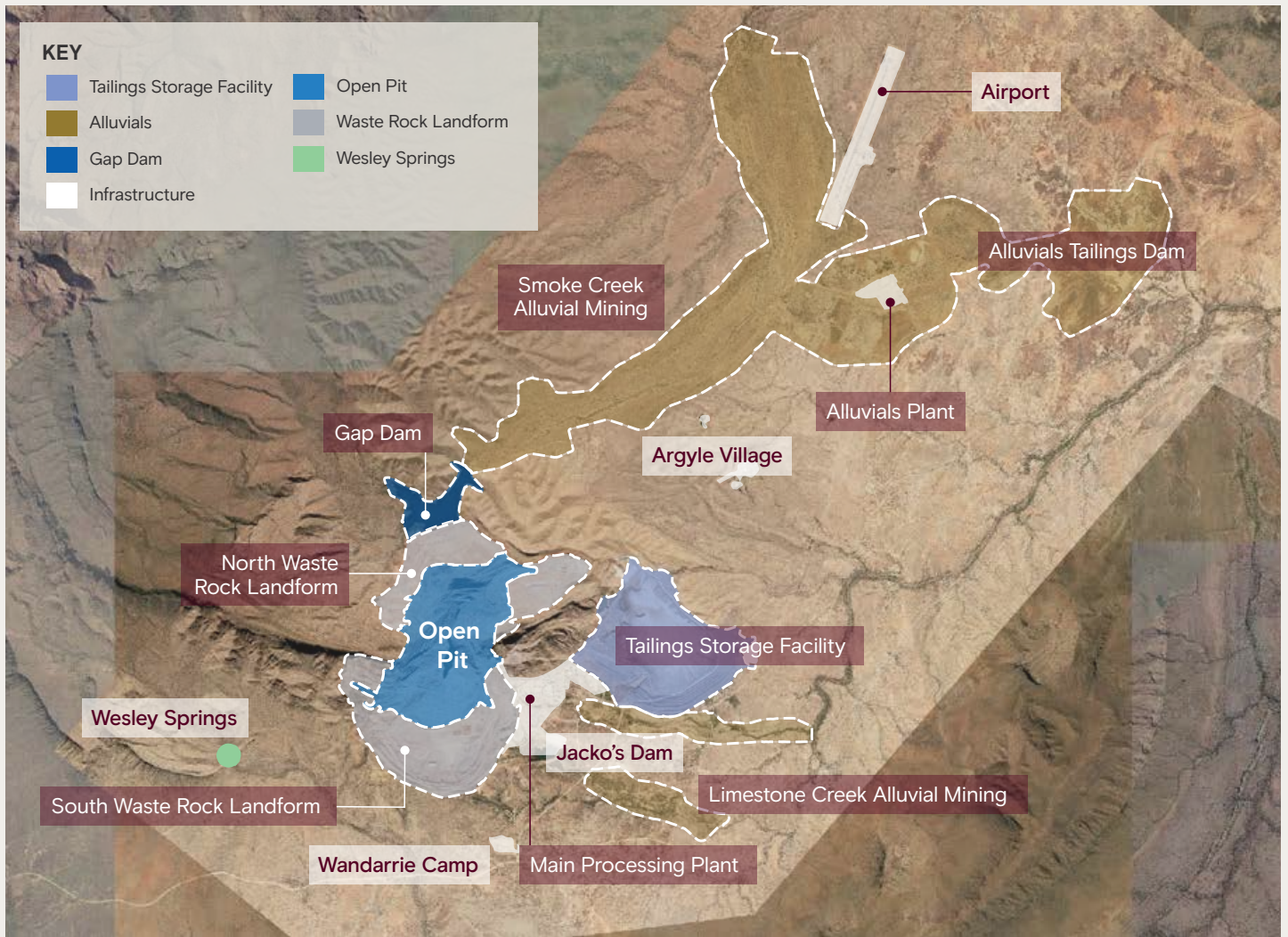
December:  
Commencement  
of 2024/2025  
revegetation season

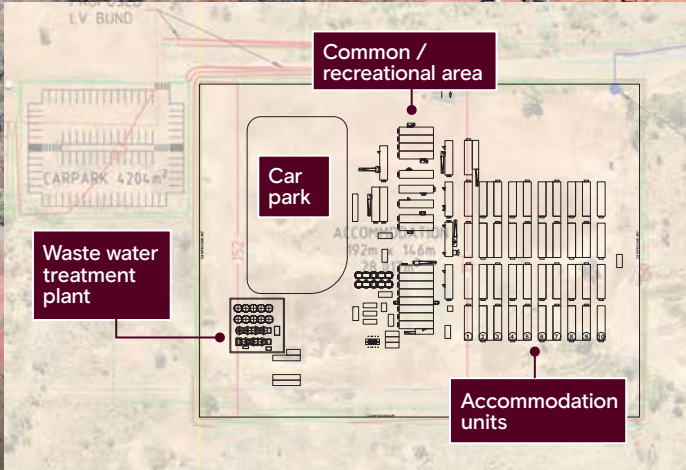
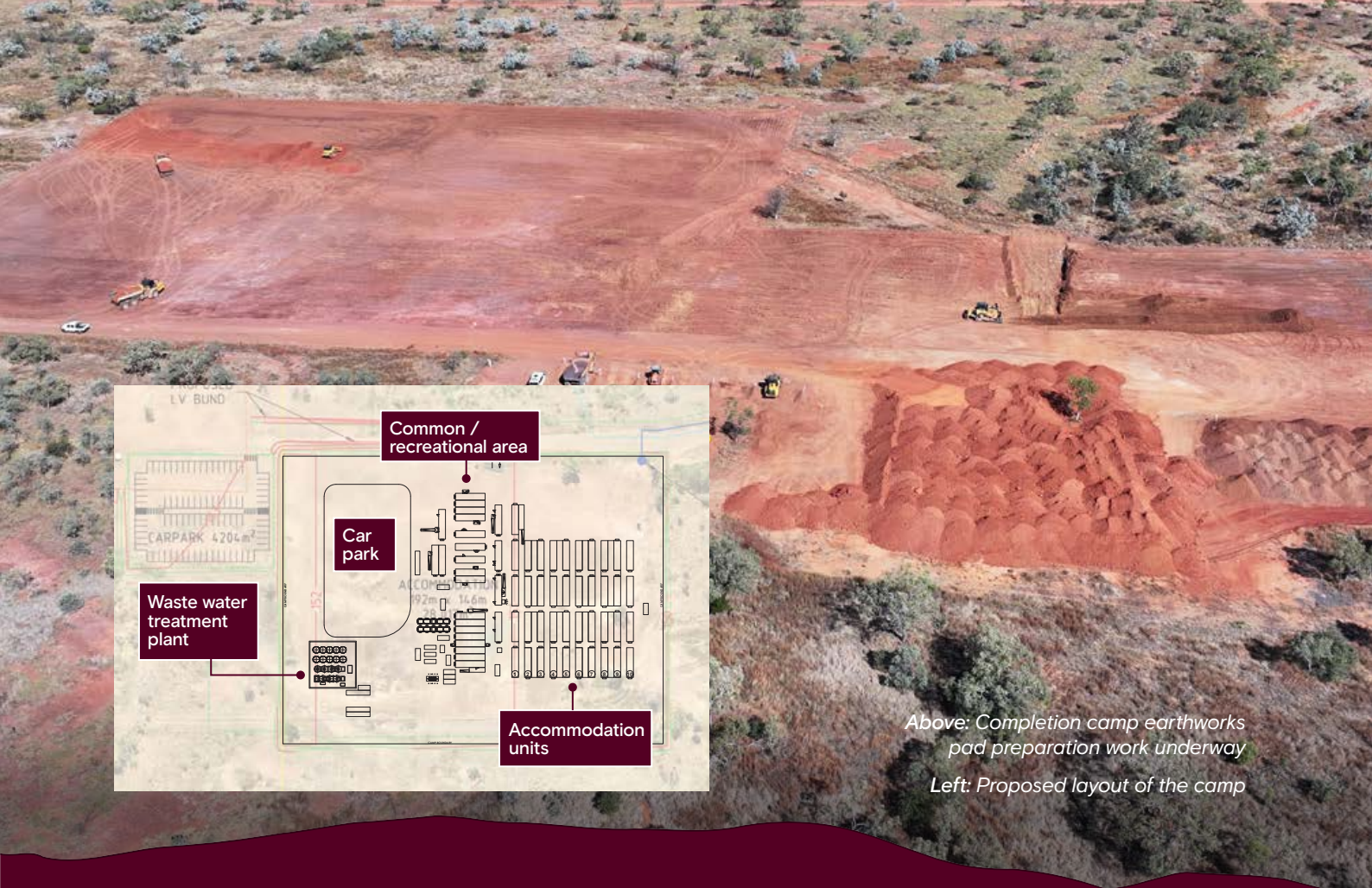
2024

2024

2024

# Argyle Diamond Mine Closure Work Area Domains





Above: Completion camp earthworks pad preparation work underway  
Left: Proposed layout of the camp

# Infrastructure

## Completion camp update

The proposed Completion Camp, which is planned to be built in the Limestone Creek area is set to commence construction in August 2024.

MDM is currently constructing the new camp earthworks pad.

A new drinking water line to the Completion Camp will be installed from the existing water treatment plant.

The camp will consist of approximately 160 rooms complete with recreational facilities, kitchen and dining facilities and medical centre.

## Tyres and conveyors sent offsite to be recycled

More than 800 tonnes of end-of-life tyres and conveyor belts resulting from infrastructure removal activities have been sent offsite. Queensland company Carroll Engineering, will be recycling these tyres and conveyors into rubber crumb to be used in road construction.



# Landforms

*Great progress on the Tailings Dam (TSF)*

## What we did in Q2 2024

### Earthworks update

Works have progressed well in the second quarter of 2024. In April bulk earthworks contractors moved 591,864 BCM (Bank Cubic Metres) of material. This is the highest quantity of material that has been moved so far on the waste rock landform re-shaping works.

There has been tremendous progress on the Tailings Dam (TSF) Main Dam Embankment (MDE). This area is being rapidly transformed from the terraced embankments we are used to seeing, into a smooth face, ready to receive rock protection and growth media.

MDM and GJC supported by other Traditional Owner Businesses have been instrumental in progressing the Tailings Storage Facility (TSF) and old process plant area. The TSF West is being rehabilitated by MDM. Profiling works have been completed in the West dam embankment and retention paddock areas; rock armour is being hauled and placed on these areas to add a layer of protection against erosion.

GJC are busy with various earthwork packages and have made good progress with the process plant area.

# Environment

## What we did in Q2 2024

### Seed collection update

A total of 415kg of seed was reported so far in Q2 against a target of 704kg, this included the collection of four different lifeforms and 16 different species. We reached the total project collection of *Cymbopogon bombycinus* (citronella grass) and *Cymbopogon procerus* (lemon grass).

However other grass species such as *Aristida pruinosa* and *Themeda triandra* continue to be challenging and fall further behind collection targets. Q2 closed out the grass season which means the total kg of grasses collected this season was 261kg. Although the grass collection season finished with some high collection months, long-lived grasses are still proving to be the lifeform most behind collection targets and are a key focus for the seed collection teams. GSO acquired a new grass seed harvester with support from Rio Tinto. They used the seed harvester for the first time this season and the team was able to capture lessons to inform next season's collections.



Gelganyem Seed Operation (GSO) Stored seed collection



Gelganyem Seed Operation (GSO) new Savannah Stripper grass seed harvester



## Weed management update

We continued weed management works in Q2. These activities include but are not limited to:

- The more recently rehabilitated portions of Alluvial Tailings Dam 3 (ATD3) and Alluvial Tailings Dam 4 (ATD4) areas.
- Northeast Upper (NEU) and North Central (NC) rehabilitation, which shows well established native vegetation. The main weed treated across these areas was *Calotropis procera* (rubber bush).
- The South Waste Rock Landform (SWRL) including treatment of Kapok, Calotropis and *Passiflora foetida* (wild passion fruit).
- Weed treatment on the Tailings Dam surface primarily targeted *Jatropha gossypifolia* (Bellyache bush) and *Aerva javanica* (kapok bush). This was the third round of weed control at this location and it was evident that there had been successful treatment of *Jatropha gossypifolia* (Bellyache bush). However, further management is required.

## Weed control progress photos



*Bellyache bush (Jatropha gossypifolia)* at Limestone Creek June 2023, one week post treatment



*Bellyache bush (Jatropha gossypifolia)* at Limestone Creek March 2024 showing effectiveness of weed control

## Images of weeds at Argyle mentioned as part of recent control campaigns



*Calotropis procera* (rubber bush)



*Aerva javanica* (kapok bush)



*Passiflora foetida* (wild passion fruit)

### Citations

Above - Western Australian Herbarium (1998-). *Florabase—the Western Australian Flora*. Department of Biodiversity, Conservation and Attractions. <https://florabase.dbca.wa.gov.au/> (Accessed 6 June 2024).  
 Left - Daniel J. Ohlsen. *Passiflora foetida*, in P.G. Kodala (ed.), *Flora of Australia*. Australian Biological Resources Study, Department of Climate Change, Energy, the Environment and Water: Canberra.

## Annual aerial imagery completed

Every year, we carry out aerial imagery and LiDAR flights over the Argyle site. This high accuracy and high-resolution imagery is used for various aspects of the closure project such as remote sensing methodologies that support on-ground revegetation monitoring, erosion and weed management. This year's aerial imagery and LiDAR flights were flown over 29 April and 1 May.

## Rehabilitation monitoring

All three of the Stantec rehabilitation monitoring field trips have been undertaken which wraps up the 2024 annual rehabilitation monitoring program. These trips involved monitoring of both analogue (reference) sites and all rehabilitated areas at Argyle including but not limited to:

- the North Waste Rock Landform and South Waste Rock Landform
- Tailings Storage Facility Surface (TSF)
- Alluvial Mined Areas
- Alluvial Tailings Dam 3, 4 & 5.

The monitoring results will be assessed over the coming months and the reports available at the end of the year for sharing with Gelganyem.



*North East Upper - Year 1 of monitoring  
(Approx. 4 months)*



*North East Upper - Year 2 of monitoring  
(Approx. 16 months)*



*North East Upper - Year 2 of monitoring  
(Approx. 16 months)*



*North East Upper - Year 1 of monitoring  
(Approx. 4 months)*

The final rehabilitation monitoring campaign was scheduled from 20–27 May. The seed collection teams travelled to Argyle to visit the rehabilitation areas and see how Stantec undertake the monitoring activities such as assessing the species coming up from seeding and fauna sightings in the rehabilitation.



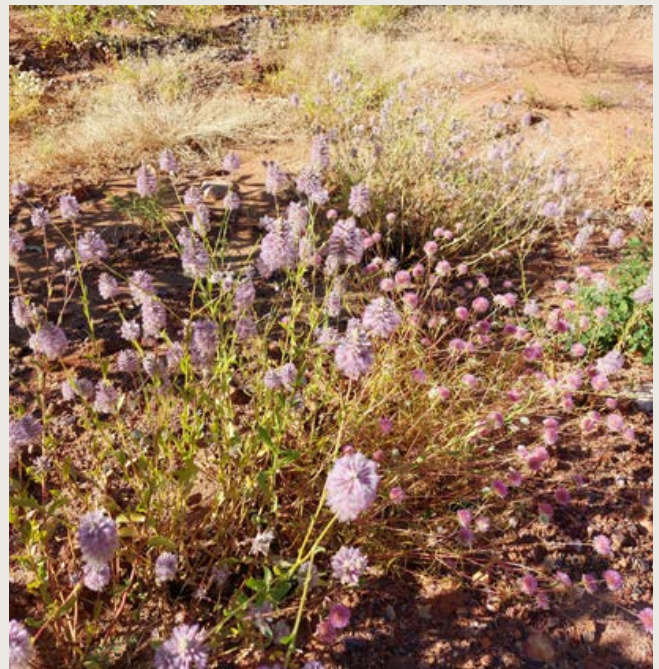
*The Gelganyem Seed Operation (GSO), Top End Seeds and the new Gelganyem technical officer visited Argyle to meet with Stantec to discuss the rehabilitation results*



*The Gelganyem Seed Operation (GSO), Top End Seeds and the new Gelganyem technical officer visited Argyle to meet with Stantec to discuss the rehabilitation results*



*Bower bird nest (bower) spotted on site during GSO, TES and Stantec site visit during rehabilitation monitoring*



*Flowers in bloom on the South Central rehabilitated areas*

We carried out aquatic ecosystem monitoring from 15–20 April to assess aquatic ecosystem function and surface water quality in Argyle’s downstream receiving environments of Smoke, Limestone, and Wesley creeks. The assessment includes monitoring of things such as macroinvertebrate abundance and diversity.

After having to postpone field works at the end of March due to the late wet season rains, Stantec undertook the annual fish sampling event at Argyle 16/04/2024 to 22/04/2024 (the fourth monitoring event undertaken by Stantec). The fishing event aims to target species of fish consumed by Traditional Owners in the creeks surrounding Argyle Diamond Mine

with the fillets tested as part of the contaminated site program. Over the seven days, the Stantec team were assisted by the Argyle Rangers and were joined by Traditional Owners out at Flying Fox Creek.

Fish numbers within Limestone Creek were slightly lower than previous years due to only shallow pools remaining, but Gap Dam and Flying Fox Creek produced similar numbers to previous years. In total, around 100 fish were caught across the 4 locations with 64 target species caught and sent for analysis including 25 catfish, 3 silver cobbler and 36 Sooty Grunter (bream).



A few photos taken during the annual fish sampling event

## What we’re doing next

- Weed control activities will continue into Q3 2024, focussing on secondary annual treatment of rehabilitated areas and upstream Neem Trees.
- Seed collection is generally quieter during the back end of Q2 and start of Q3 due to seasonality of the species, but some species such as *Tephrosia rosea* and *Corymbia opaca* may be able to be collected. However, scouting for species and collection of available species will continue.



*Tephrosia rosea*

*Corymbia opaca*

Citation for the above images: <https://florabase.dbca.wa.gov.au/> (Accessed 6 June 2024).

# Communities



## Cross culture awareness and Manthe commenced at Argyle for 2024

Elders Ted Hall, Helen Pinday and Julie Toby have been busy with the kick-off of the cross culture and Manthe programs for the year. The first overnight cross culture awareness training session was held with senior leaders from Rio Tinto participation.

So far, we have held seven Manthe ceremonies and five cross culture awareness training sessions for 2024. The first Manthe we held for the year was a special one where all work on site was paused for the duration of the ceremony. So far about 140 people have participated in Manthe ceremonies. We have also held two overnight cross culture awareness training sessions.



## GJC wins the East Kimberley Chamber of Commerce Business Excellence Award for the second year in a row

Traditional Owner Business Goorng Jimbila Contracting (GJC), our contract partner delivering the Balance of Landform and utilities scopes of work, took out the Indigenous Excellence award at the East Kimberley Chamber of Commerce Business Excellence Awards in April.

Goorng Jimbila Contracting (GJC) was established in 2010, specialising in a wide range of civil construction services to the mining and civil construction sector. GJC is proudly 100% owned by Traditional Owners, with profits distributing back to Gelganyem Trust for the sustainable future of Traditional Owners and their families.

GJC has a total of 42 staff, 55% are Aboriginal, 21% of whom are Traditional Owners.

Gelganyem Seed Operation (GSO) was also nominated for the same category.



## Second Buy Local team visit to Argyle

Rio Tinto Buy Local team visited in May to help TOBs to become registered to be able to apply for other Rio Tinto contracts.

This visit was a follow up from Buy Local Team visit in October 2023 when TOBs were provided information about Rio Tinto's Buy Local program.

The Buy Local program is to help Indigenous and local businesses to access more contracting opportunities with Rio Tinto

by registering on the Rio Tinto Buy Local portal – scan this QR code to register and see the EOI portal.



The Buy Local team are currently based in Karratha and Perth and they travel all over WA to support local businesses engagement with Rio Tinto contracts.

For more information contact Navah Kerr on 0411 078 708 or at Navah.Kerr@riotinto.com

## Argyle Closure update to the Kimberley Development Commission (KDC) and Shire of Wyndham East Kimberley (SWEK)

The Argyle Closure team accompanied Gelganyem leadership to meet with the Kimberley Development Commission and the Shire of Wyndham East Kimberley to provide them with an update about the Closure project. Some good ideas were discussed during this session.

# The Rio Tinto Team

**Melissa Cundy**

General Manager - Argyle Closure

## RT Closure

**Tegen Scott**

Communities & Social Transition

**James Norman**

Closure, Rangers & Transition

**Michelle Ryan**

HR Closure

**Steve Sharpe**

Regional Business Development

**James Petch**

Site Services

**Amanda Fernando**

Communications

**Nancy Davis**

CSP Superintendent

**Domino Bidwee, Blandina Barney, Zerreth Thomas, Clinton Thomas**

Argyle Ranger Team

## RT Projects

**Matt Renkert**

Project Manager Argyle Closure

**Lydia Mills**

Senior Project Engineer - Environment

**Simon Ety**

Senior Project Engineer  
(Lead)

**Kevin Kavanagh**

Construction

**Colm Harkin**

Site HSE



# Employment and Training

- Djaringo Training have been engaged to support Traditional Owner Business employees to convert their Verifications of Competency (VOCs) to operate machines on site into Nationally Accredited qualifications. The Djaringo team visited site in June and will start assessing VOC'd operators to achieve these qualifications in July. This will help Traditional Owner Businesses and their employees get more work after closure. We need to now urgently collect all of the information so that the assessments can start on site soon. If you are an employee of a Traditional Owner Business, or a Traditional Owner working anywhere on site, and you already have a VOC to operate a machine make sure you speak to your leader to find out more.
- Sodexo is a great place to start working at Argyle and they provide on the job training. A few people who have started working for Sodexo have transitioned into operating machines in the project.

## Employment opportunities

Employment opportunities such as machinery operating and hospitality, are regularly available at Argyle. If you are interested in employment with Argyle or any of our contract partners, please contact Steve Sharpe on 0417 181 119 or at [steve.sharpe@riotinto.com](mailto:steve.sharpe@riotinto.com)



## Contact us

If you'd like more information or if you have any queries about the closure, please get in touch [enquiries.argylediamondmine@riotinto.com](mailto:enquiries.argylediamondmine@riotinto.com)

Grievances and complaints phone number  
1800 674 774

**RioTinto**