



# Argyle

Mine Closure

Updates on the  
Argyle Mine Closure

Issue 6  
September 2024

**RioTinto**

## Welcome to the sixth edition of the Argyle Diamond Mine Newsletter

I would like to start by acknowledging the Miriwoong and Gija people from the seven Dawang/Daam groups who are the Traditional Owners of the Barramundi Dreaming – the Tiltuwam, Mandangala, Yunurr/Yalangga, Neminuwarlin, Balaburr, Bilbildjing and Upper Jimbila people.

The Argyle team came together to share a few great events and activities for this year’s NAIDOC Week including an exciting menu featuring bush tucker by our site services contract partner Sodexo, a NAIDOC-themed quiz at the Return to Work session and a BBQ lunch on Sunday to complete the week. Our site teams were also treated to some great Indigenous Australian movie screenings every evening!

We were also able to share your fantastic video and distribute copies of your book ‘From Dreaming came Diamonds’ with both the site and Perth teams as part of our NAIDOC Week celebrations. These are a beautiful creation by you, the Traditional Owners of the lands on which the Argyle mine is located, and were deeply appreciated and enjoyed by the Argyle workforce.

July was a busy month and we thoroughly enjoyed hosting the annual Traditional Owner site visit on 25 July. I hope that those of you that were able to attend, enjoyed catching up with your family members and seeing the progress of the rehabilitation activities on site.

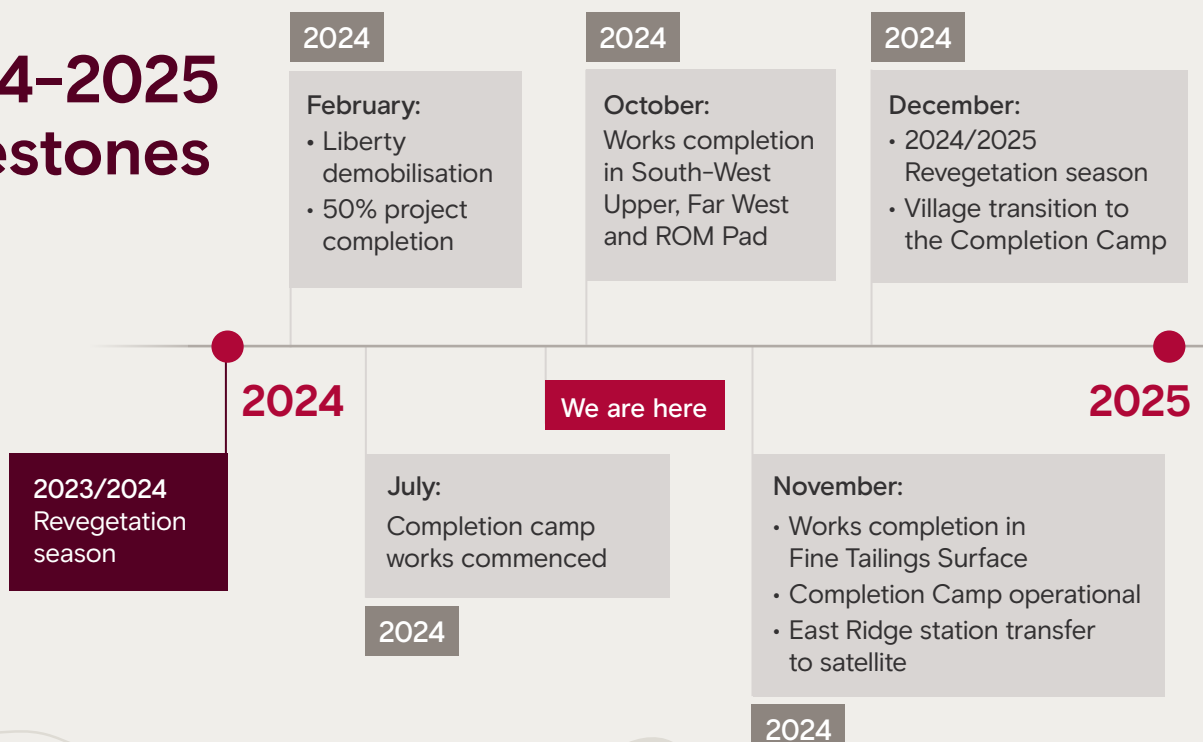
We also hosted the Government Agency regulators on their annual site visit on 30 July. We had representatives from the Departments of Jobs, Tourism, Science and Innovation (JTSI), Water and Environmental Regulation (DWER), Energy, Mines, Industry Regulation and Safety (DEMIRS) as well as representatives from Gelganyem. The regulators continued on to Kununurra the next day to meet with Traditional Owners.

In early September, Rio Tinto Chief Executive Australia, Kellie Parker and Gelganyem Executive Chair Kia Dowell participated in a ‘fireside chat’ at the Kimberley Economic Forum.



**Melissa Cundy**  
General Manager  
Argyle Closure

## 2024-2025 Milestones





2025

**February:**  
Liberty  
Industrial  
mobilising to site

2025

**June:**  
Airport  
infrastructure  
removal

2025

**October:**

- Monitoring & Maintenance Hub completed
- South bulk earthworks completed

2025/2026  
Revegetation  
season

2026

**January:**

- Workforce mobilised to Completion Camp
- Disconnect power source from the Ord Hydro / Commission standalone generators

2025

**March:**  
TSF West works  
completed

2025

**September:**  
Site offices  
removed

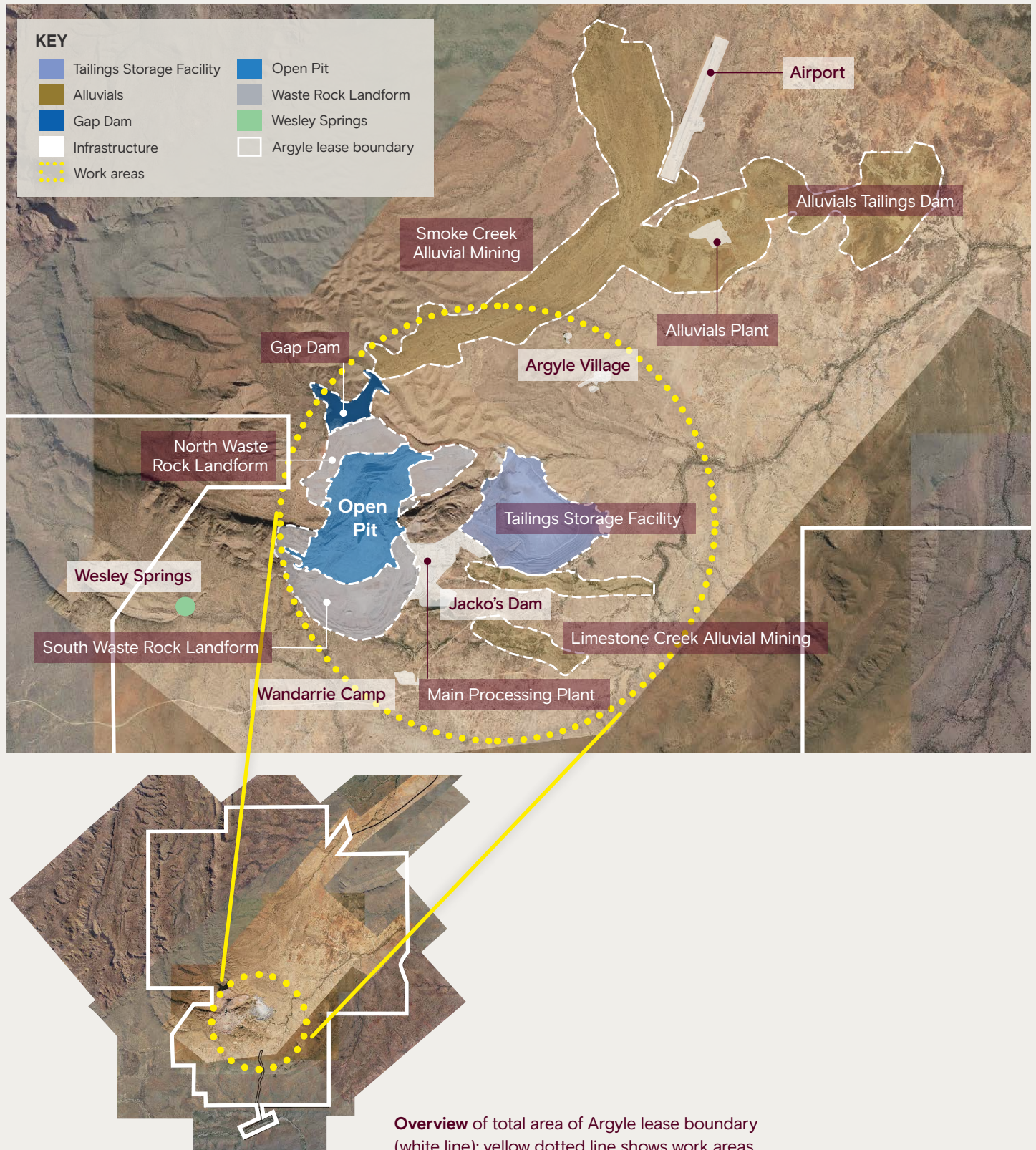
2025

**November:**

- North West works completed
- TSF surface completed

2025

# Argyle Diamond Mine Closure Work Area Domains



Overview of total area of Argyle lease boundary (white line); yellow dotted line shows work areas



*Above: Aerial view of completion camp progress*

# Infrastructure

## Completion camp installation in progress

MDM Mining & Civil finalised the completion camp earthworks pad in July. MDM cleared and grubbed an area of over 37,000 sqm and moved more than 15,000 cubic metres of material to construct the earthworks pad. The work was successfully completed and handed over to our new contract partner, Australian Portable Camps (APC) in mid-July.



*Completed earthworks pad*



*Progress at completion camp as at mid-August*



*Accommodation in the new camp*



*Dining facilities in the camp*



*The camp's kitchen*

APC mobilised to site in July and made some rapid progress in camp installation. All of the buildings in the 183-room camp has been delivered to site. The camp also consists of a kitchen, dry mess, gymnasium, communal showers and other facilities.

All workers on site will be staying in the new Completion Camp from January 2025.

## **Coming up in Q4 2024:** What we're doing next

Preparations are underway for decommissioning the Argyle Village. We are currently working on informing the site teams on timeframes and preparing for the transition.

# Landforms

An aerial photograph of a large, reddish-brown tailings storage facility (TSF). The facility is a vast, flat expanse of earth, with a prominent grey liner running along the left side and across the middle. The surface shows various patterns of erosion and construction, including several spillways and catchment bunds. The surrounding landscape is arid, with sparse vegetation and a clear blue sky. In the background, there are reddish-brown hills and mountains.

## What we did in Q3: May –August

### TSF rehabilitation update

In the third quarter, we carried out load and haul, rock armour installation and growth media haulage to the retention paddocks and west dam embankments.

Our Earthworks team are currently carrying out the second round of night shift work that commenced in early July. The focus for this round was on spreading growth media on the Tailings Storage Facility (TSF) Main Dam Embankment. The nightshift crew consisted of 2 operators and dozers from MDM and 2 operators and dozers from Piacentini.

A major focus for the TSF rehabilitation works was to build the various rock spillways and catchment bunds in the retention paddocks. The spillways reduce the storage of water on the surface of the TSF, maximising the long-term stability of the landform.



South West Upper (SWU) area before (left) and after growth media spread

## Growth media progress

Growth media spreading has been completed on the South West Upper (SWU) area by MDM Mining & Civil.

As at mid- August, approximately 202Ha (201,000 cubic metres) of growth media has been placed at various locations across site. Some of the larger areas are the TSF (47.8 Ha) and the Main Dam Embankment (28.6 Ha).



Above: Areas where the bulk earthworks teams have been sourcing growth media to be spread



## Process plant area progress

Gooring Jimbila Contracting (GJC) have completed reprofiling and shaping the AK1 process plant area of approximately 513Ha.

## Seepage infrastructure

The seepage Infrastructure works have commenced in September and Piacentini have awarded GJC a portion of the works that includes excavation and pipe installation.

## Coming up in Q4 2024: What we are doing next

### Growth media spreading and seeding

In the next quarter, we are planning to carry out ripping and seeding in specific zones within the North Waste Rock Dump (NWRD), South Waste Rock Dump (SWRD), Run of Mine (ROM), Main Dam Embankment and the Tailings Storage Facility (TSF) areas.

### Telecom Ridge spillway

Works have commenced at the downstream end of the Telecom Ridge spillway. While the works are in progress, there will be road deviations around the spillway to maintain earthworks traffic.

The majority of these works have been awarded by Piacentini to MDM Mining & Civil and they are making timely progress.

# Environment

**What we did in Q3:**  
May – August

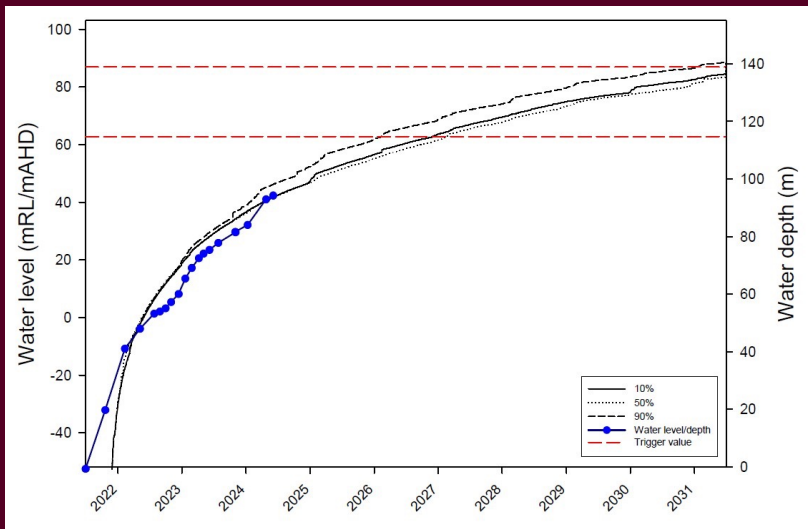


*AK1 Pit Lake looking south, 4 June 2024 (Photo: Stantec)*

## **Pit Lake Monitoring update**

The biannual pit lake monitoring was undertaken in June. Water samples were taken from various depths in the north and south of the pit lake using a drone and sent off for laboratory analysis.

Although completion criteria trigger values are not applicable until five years after closure due to very high variability in the initial stages of pit lake development, both the electrical conductivity (EC) and pH were within the trigger ranges and in line with the model predicted values.



AK1 Pit Lake Water Level model predictions against monitoring results Jun-24 (ref: Mine Lakes Consulting).

We are currently in the initial stages of pit lake development and it is pleasing to see that both the Electrical Conductivity (EC) and pH levels are within the trigger ranges and are in line with the model predicted values. We will continue to take pit lake water samples every six months and will continue sharing the results with Gelganyem.

## Weed control progress

Weed control continued in the third quarter with Territory Weed Management (TWM) on site in June & July to conduct weed control activities along creek lines, Alluvial Tailings Dam (ATD)4, the Village and TSF.

The Q3 weed control campaign also focused on Rubbervine as a significant species. The TWM team successfully located all prior

recordings of rubbervine to ensure prior treatment was effective, and these are high-risk areas for subsequent recruitment. They also located and treated the rubbervine plant (FID127) consistent with that which had been recorded by WA Government aerial survey.

## Coming up in Q4 2024: What we're doing next

With regards to rehabilitation, Q4 activities will be very similar to Q3 with a much stronger focus on ensuring that areas are ready for seeding. Growth media will be spread and ripping of areas will commence, timing is important to make sure that the maximum amount of seeding is undertaken before the rains begin. The drone seeding teams will commence planning and are aiming to mobilise to site in late November.

Seed collection will ramp back up with more species becoming seasonally available for collection toward the back end of the year. The seed teams will start preparing for the largest seeding season to date making plans for seed mixes, seed treatment and mixing.

# Communities



## What we did in Q3: May –August

### NAIDOC Week celebrations at Argyle

This year's NAIDOC Week, from 7 July – 21 July, presented the Argyle site team a great opportunity to present the Argyle Traditional Owner picture book which presents an honest account of the history of the Argyle Diamond mine from the perspective of Traditional Owners to our workforce. The video, 'From Dreaming came Diamonds' premiered to the site and Perth-based workforce along with the gifting of the books.

NAIDOC Week activities featuring daily movie screenings, daily dinner menu items, Sunday BBQ, overnight cross culture awareness training and cultural shares, continued for two weeks on site to cover workers from both panels.



*The Perth-based team book gifting event*



*Photo from Traditional Owner visit*

## **Annual Traditional Owner and Regulator site visits**

On Thursday 25<sup>th</sup> July, the Annual Traditional Owner Site Tour commenced. Traditional Owners, Gelganyem representatives and Rio Tinto representatives visited multiple locations throughout the mine site, including the Village and ATD areas.

The annual Government Agency site tour took place on July 30, following a progress and compliance update presentation on July 29. The tour included stops at all Mine Closure Plan (MCP) domains including but not limited to; TSF Heritage Site, TSF, NWRL, Gap Dam, Analogue sites, DA Infrastructure area, SWRL, Completion Camp location and Wandarrie Landfill.



*Photo from Regulator visit*

## Update from the Ranger Team

The Argyle Rangers have been supporting the site teams on various environmental scopes of work such as Boab relocations, pest control and monitoring activities that took place in the third quarter. They have also worked closely with the CSP team to support Traditional Owner engagements and visits while also supporting cross-culture and Manthe programs and other cultural heritage management work.

The CSP team are currently working on implementing the planned programme and are excited to share more in upcoming issues. The team are looking forward to upcoming engagements with TOs to showcase the work they have been doing so far.



## Fred Martin returns to Argyle

Fred Martin has returned to the Argyle Closure project as an employee of Goring Jimbila Contracting (GJC). Fred is bringing his 20 years of expertise in the Argyle area and stakeholders to support the Argyle Closure CSP team to support the Rangers with field work, supervising and engagement activities.





# Traditional Owner Businesses

## What we did in Q3: May –August

### The Argyle Accreditation Project commenced

On 31 July, the Argyle Accreditation Project kicked off. Partnering with Kimberley-based Djarango Training, the project focuses on supporting Traditional Owner Business employees to obtain Nationally accredited tickets.

In 2023, our Traditional owner Businesses requested support to obtain Recognition of Prior Learning (RPL) to transition their Verification of Competency (VOC) on various machines at Argyle into Nationally accredited tickets.

Chris, the trainer from Djarango Training, observes the operators going about their work in the machine for which they are VOC'd and supports them to run through an accreditation process to ensure that they have the skills and experience to get passed out as a Nationally accredited operator.

As at early September, 34 Traditional Owner Business employees have been passed out to receive 61 certificates between them. Over 80 Traditional Owner Business employees have expressed interest in participating in the program.

## Coming up in Q4 2024: What we're doing next

The assessments will continue until a majority of participants are passed out with the aim to complete three assessments per day.

We look forward to sharing more updates from this program as we continue our progress and look out for photos of local people receiving their tickets in upcoming newsletters.

# Feature Story

## Progress photos of the infrastructure removal and rehabilitation work

Process plant  
Before closure



July 2024



North Central (NC)  
2021



July 2024



# Feature Story

North East Upper (NEU)

2021



July 2024



North West Upper (NWU)

2021



July 2024



**South Waste Rock Dump (SWRD)**

November 2023



July 2024



**Tailings Storage Facility (TSF)**

May 2023



July 2024



# The Rio Tinto Team

**Melissa Cundy**

General Manager - Argyle Closure

## RT Closure

**Tegen Scott**

Communities & Social Transition

**James Norman**

Closure, Rangers & Transition

**Michelle Ryan**

HR Closure

**Steve Sharpe**

Regional Business Development

**James Petch**

Site Services

**Amanda Fernando**

Communications

**Nancy Davis**

CSP Superintendent

**Domino Bidwee, Blandina Barney, Zerreth Thomas, Clinton Thomas**

Argyle Ranger Team

**Lola Curcic**

Principal Advisor CSP  
(Secondment for 6 months)

## RT Projects

**Ruchika Goyal**

Senior Project Manager WA Closures

**Matt Renkert**

Project Manager Argyle Closure

**Lydia Mills**

Senior Project Engineer - Environment

**Simon Ety**

Senior Project Engineer (Lead)

**Kevin Kavanagh**

Construction

**Kurt Monk**

Area Manager Execution

**Colm Harkin**

Site HSE



# Employment and Training

- There are always employment opportunities at Argyle. If you don't have a ticket to operate a machine, Sodexo is a great place to start by getting familiar with working on site. A number of local people have progressed from working with Sodexo to driving trucks and other machines.

## Employment opportunities

If you are interested in employment with Argyle or any of our contract partners, please contact Steve Sharpe on 0417 181 119 or at [steve.sharpe@riotinto.com](mailto:steve.sharpe@riotinto.com)



## Contact us

If you'd like more information or if you have any queries about the closure, please get in touch [enquiries.argylediamondmine@riotinto.com](mailto:enquiries.argylediamondmine@riotinto.com)

Grievances and complaints phone number  
1800 674 774

**RioTinto**