

RioTinto

Argyle

Mine Closure

Updates on the
Argyle Mine Closure

Issue 7
November 2024

Welcome to the seventh edition of the Argyle Diamond Mine Newsletter

I would like to start by acknowledging the Miriwoong and Gija people from the seven Dawang/Daam groups who are the Traditional Owners of the Barramundi Dreaming – the Tiltuwam, Mandangala, Yunurr/Yalangga, Neminuwarlin, Balaburr, Bilbildjing and Upper Jimbila people.

We are very pleased to be extending the reach of this quarterly Argyle Closure publication to share the work that we're doing at Argyle not only with Traditional Owners but also with the diverse group of stakeholders including local communities and regulators, that have an interest in the progress of closure activities on site.

We are now entering our fourth revegetation season at Argyle with drone seeding making great progress on site in December 2024 and continuing through to January 2025. My thanks go out to the dedicated seed collection teams at Gelganyem Seed Operation (GSO) and Top End Seeds who worked throughout some of the hottest conditions of the year to collect, treat and mix the 2,250kg of seed that will be spread across approximately 300 hectares of rehabilitated land this season. You can read more about our upcoming revegetation season on page 11.

My thanks also go out to the dedicated team of technical experts working for both Rio Tinto and those we have funded as independent experts providing advice to Gelganyem and the Traditional Owners for their review and revision of the 2021 Mine Closure Plan. The feedback from Gelganyem

in addition to Regulator consultation through five completion criteria workshops has resulted in the production of the 2024 Mine Closure plan which was issued in draft to Gelganyem on behalf of Traditional Owners in October and submitted to the Regulators on 12 December. We look forward to continuing to receive and incorporate feedback from the Gelganyem Independent Technical Review as well as feedback from the Regulators through the first half of 2025. We have included a feature story with some information on the Mine Closure Plan on pages 16-17.

As the year comes to an end, our site personnel are preparing for another major milestone – transitioning into the recently installed completion camp, in preparation for the demolition of the Argyle Village in 2025. Manthe ceremonies will be held to say goodbye to the Argyle Village and to bless the new camp before transition to ensure the cultural safety of our teams.

We are hoping for another strong season for revegetation and a smooth transition of our workforce into the new completion camp.

Wishing you all a happy holiday season. Take care and stay safe.



Melissa Cundy
General Manager
Argyle Closure

2024-2025 Milestones





2025

February:
Liberty
Industrial
mobilising to site

2025

July:
Argyle village
demolition
commencing Q2

2025

October:
• South bulk
earthworks
completed

2025/2026
Revegetation
season

2026

January:

- Workforce mobilised to Completion Camp
- Disconnect power source from the Ord Hydro/Commission standalone generators

2025

March:

- TSF West works completed

2025

September:

- Site offices removed
- Airport infrastructure removal

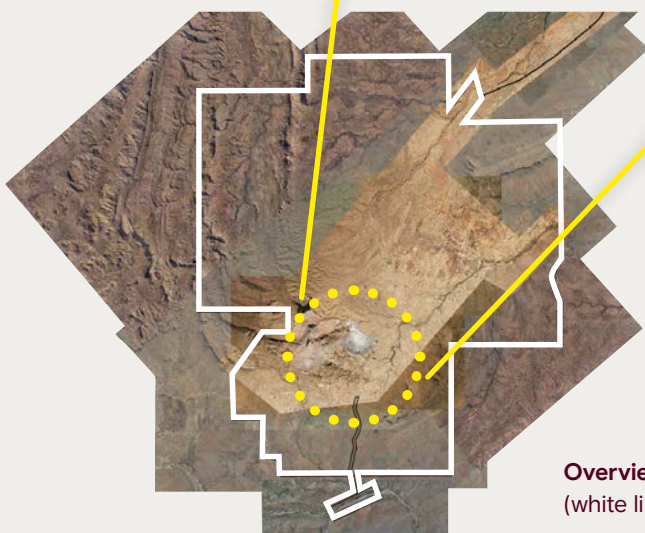
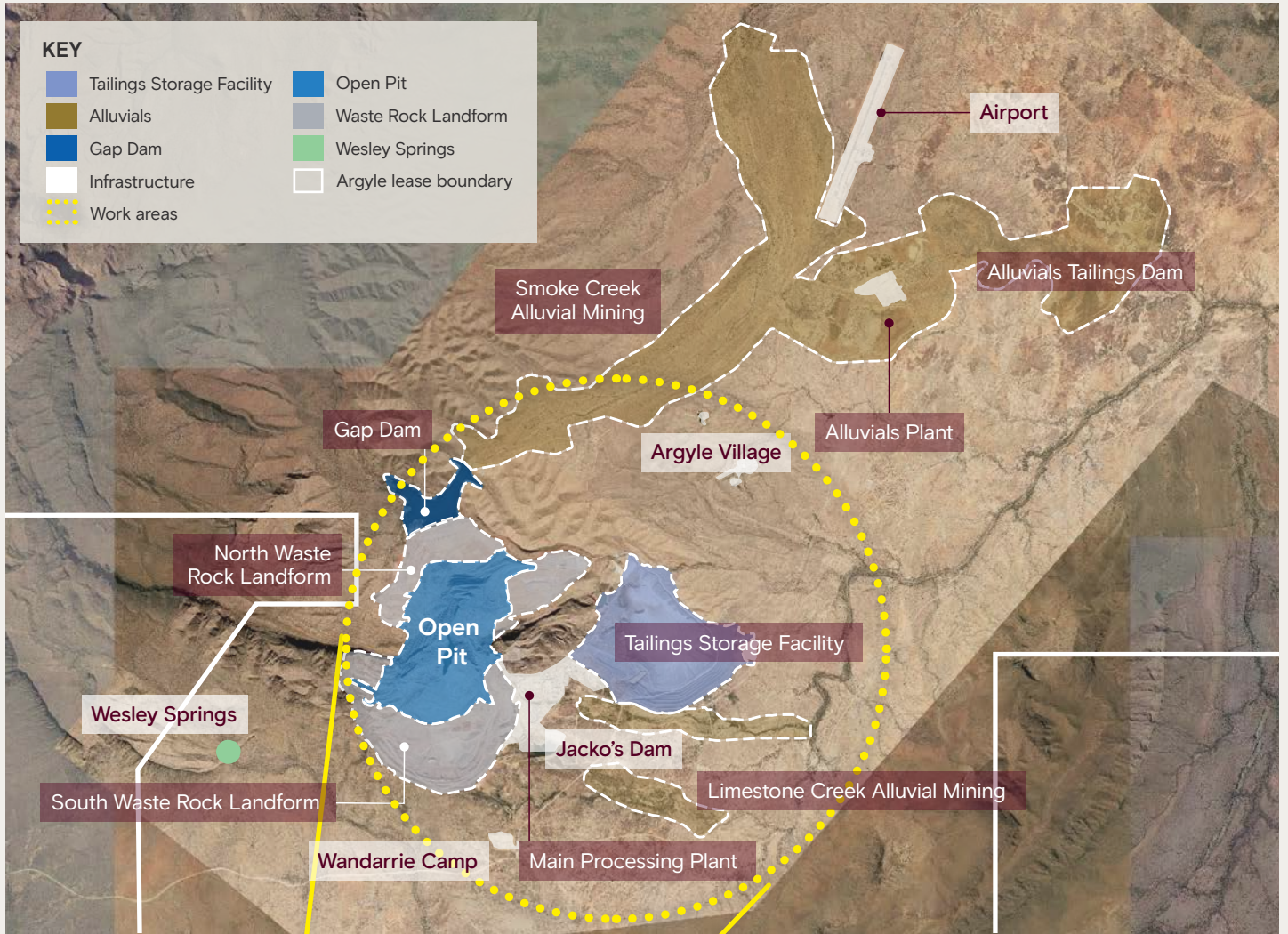
2025

November:

- Waste Rock Landforms and TSF earthworks complete

2025

Argyle Diamond Mine Closure Work Area Domains



Overview of total area of Argyle lease boundary (white line); yellow dotted line shows work areas

Infrastructure

Completion camp fully installed

Australian Portable Camps (APC) started construction of the new Completion Camp in July, in preparation for the second phase of infrastructure removal at the Argyle Closure project.



Completion camp

Consisting of 183 rooms, the Completion Camp includes a kitchen, dry mess, gymnasium and other facilities and will accommodate the closure workforce for the remainder of the project. Camp installation was successfully completed in October.

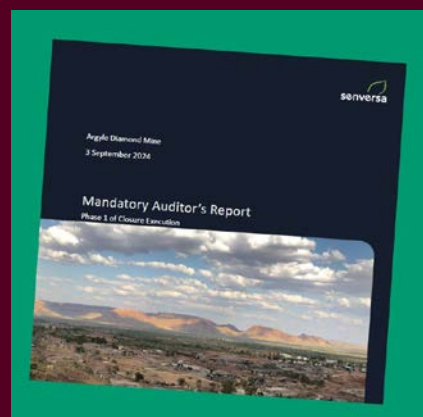
Preparations are underway to commence work on installing a new capping water pipeline to the Completion Camp. We are very pleased to confirm that this scope of work has been awarded to Traditional Owner Business North Rivers Plumbing and Gas.

Mandatory Auditor's Report for Phase 1 Remediation

Contaminated sites assessments at Argyle are audited by a regulator-accredited auditor to verify the technical standard of works undertaken. The Mandatory Auditor's Report (MAR) for Phase 1 of the remediation program has been drafted and submitted to the Department of Water and Environmental Regulation (DWER) for review.

This is the second MAR that has been prepared for the project. The first MAR was an audit of all the technical assessments that were used to develop the remediation plan. This second MAR represents an audit of the remediation plan implementation, validation sampling and ongoing monitoring of creeks, groundwater and fish.

A third MAR will be prepared at the end of closure execution once all remediation works are complete.



Preparations for Phase 2 of Infrastructure Removal & Remediation

Infrastructure removal contract partner Liberty Industrial is preparing to mobilise back to Argyle in Q1 2025 to complete the next phase of infrastructure removal and remediation.

As part of the planning process, 14 Expressions of Interest (EOIs) have been issued for Traditional Owner Business opportunities to support these works including, but not limited to, service isolations and make safe, bitumen road removal, underground service removal, wet and dry hire of equipment, landfill construction and capping, and for engineering and health and safety mentorship. Proposals were due on 10 November and are currently under evaluation.

Liberty has also been undertaking options assessments for some of the higher risk infrastructure removal works where conventional removal methods may not be suitable. These assessments are close to completion and the next step will be to seek further specialist support from within Rio Tinto to progress with detailed risk assessments and approvals.

Goorng Jimbila Contracting (GJC) has completed the partial capping of the Wandarrrie Landfill ready for the next phase of filling and capping works scheduled for 2025. This work will help to protect the existing capping throughout the wet season and greatly assists with the overall management of stockpiled material in the area which will allow access to create new cells when required.



Coming up in Q1 2025: What we're doing next

Preparations are underway for decommissioning the Argyle Village. We are currently working on the site teams confirming timeframes and preparing for the move to the Completion camp.

Landforms



*Above: excavation of the Telecom Ridge Spillway
Inset: backfilling of the vent shafts*

What we did in Q4: September - December

We have made some significant progress across the TSF (Tailings Storage Facility/ Tailings Dam), waste rock dumps and processing plant area in 2024.

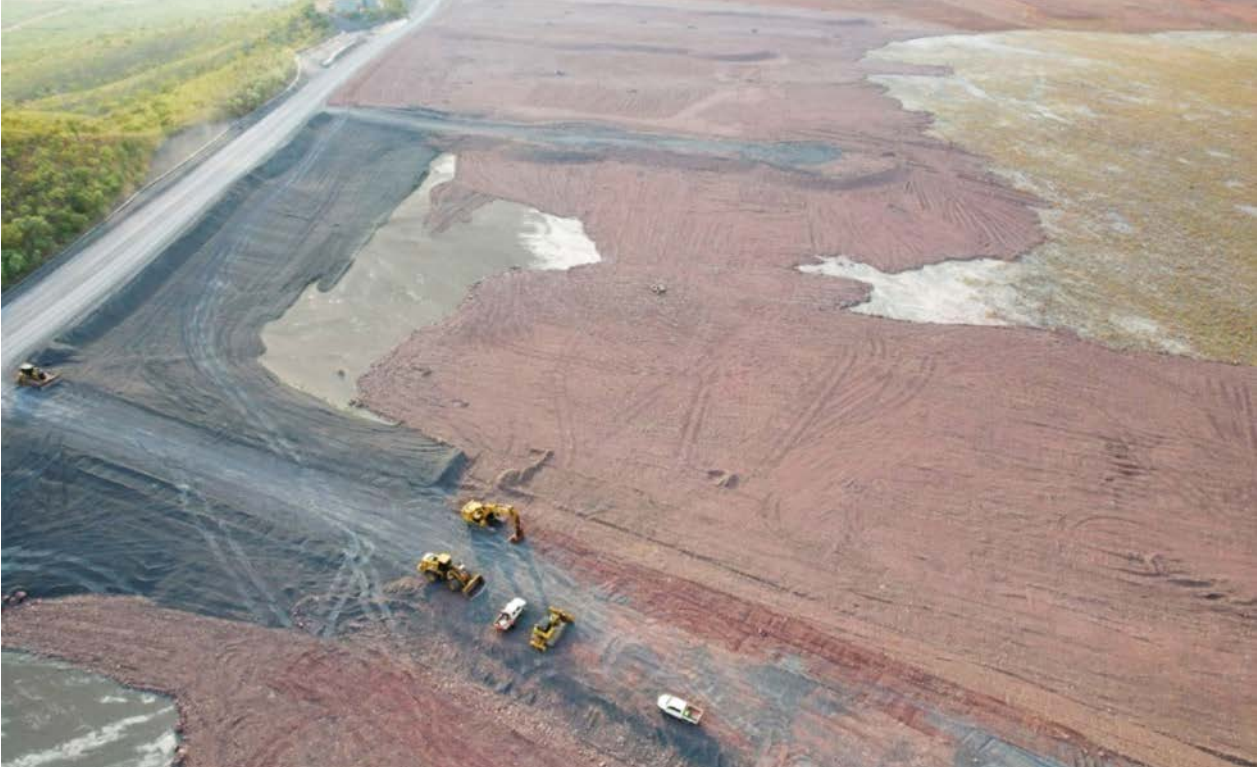
In August, excavation of the Telecom Ridge Spillway commenced on the AK1 Tailings Storage Facility. The purpose of the spillway is to divert surface run off from the facility into the nearby Limestone creek. The spillway will be armoured with approximately 30,306m³ of screened rock and is due to be complete in January 2025.

In October, we commenced backfilling 2 of our 4 vent shafts. The vent shafts are 4m in diameter and over 60m in depth. They are backfilled with various layers of rock, cement stabilised fill and general fill. Two shafts will be completed this year, and the remaining two in 2025.

In October we also commenced growth media ripping activities in preparation for seeding from December. A total of 235.5 ha has been ripped this year between the waste rock landforms, tailings dams and process plant area with a forecast of 280 ha before the end of the year.

TSF progress photos

January 2024



Mud Rock spreading ongoing on TSF surface

November 2024



TSF Surface – Growth media ripped and spread

January 2024



TSF main dam embankment reprofiling works

November 2024



Ongoing growth media spreading and ripping on the TSF main dam embankment

January 2024



November 2024



TSF West Retention Paddocks, Dam Embankment and Light Industrial Area (LIA) Embankment completed

South Waste Rock Dump progress photos

January 2024



South West Upper (SWU) reprofiling works

October 2024



Growth media spreading completed on the SWU

Coming up in Q1 2025: What we're doing next

We anticipate finalising the balance of land formation works at the alluvial tailings dam (ATD) areas. Reprofiling activities continue at the north west upper domain with ongoing of rock placement on the main dam embankment (MDE).

Reprofiling activities continue in old stack area on the western side of the tailings storage facility (TSF) and we commence the rehabilitation of the available northern area access roads.

Environment

What we did in Q4: September – December

2024/2025 revegetation season

Q4 is a very busy and important time for our rehabilitation activities. The seed collection teams from Gelganyem Seed Operation (GSO) and Top End Seeds (TES) worked together to withdraw all of the seed required for the 2024 revegetation season from the seed stores, and treated and mixed the 2.2 tonnes of seed for delivery to Argyle.

The GSO and Top End Seeds seed collection teams have done an amazing job working throughout some of the hottest conditions of the year to collect, mix and treat seed for the success of the Rehabilitation. This year, a new seed treatment of using water to soak some of the seed species was trialled to encourage seed germination. The seed was then mixed, packaged up and delivered to site at the end of November.

Drone seeding contract partner Dendra mobilised to Argyle at the end of November to commence seeding works just in time for the wet season. Drone seeding of approximately 300 hectares will take place over three weeks before Christmas and then again for two weeks in the New Year.

We are currently in the initial stages of pit lake development and it is pleasing to see that both the Electrical Conductivity (EC) and pH levels are within the trigger ranges and are in line with the model predicted values. We will continue to take pit lake water samples every six months and will continue sharing the results with Gelganyem.



Some seed species are scarified to improve their chances of germination. Scarification is the process of intentionally damaging seeds with harder outer shells to promote plant growth. Our seed collection teams scarified some of the hard-shelled seeds prior to mixing with other seeds and packaging or delivery.

Weed control continued in Q4 2024

Weed control continued with Territory Weed Control undertaking four weed control campaigns in Q4, focussing on rehabilitation areas, Alluvial Tailings Dams (ATDs) and along the village and creek lines.



Drone seeding commenced

Drone seeding commenced with the first lot of seed being spread on Wednesday 27th November. Approximately 100 hectares have been seeded this season (as at 4th December).

Monitoring activities

Pit Lake water monitoring for the second half of the year was conducted in late November along with surface and groundwater monitoring.



Coming up in Q1 2025: What we're doing next

By Q1 2025 we expect to receive the 2024 rehabilitation monitoring reports from Stantec for the waste rock landform and alluvial areas.

Communities



What we did in Q4: September – December

Cross Culture and Manthe ceremonies for 2024

As the weather warms up, Traditional Owner Businesses Luridgii Aboriginal Eco Cultural Tours, Savan Cultural Consultants and Julie Toby concluded cross culture awareness training and Manthe ceremonies at Argyle for 2024. This year, nearly 200 Argyle closure employees attended cross culture awareness training sessions that provide a great opportunity to learn about the Miriwoong and Gija cultures from Traditional Owner Elders. Argyle closure employees also had the opportunity to participate in 5 overnight Cross Culture awareness training sessions.

More than 400 employees attended Manthe ceremonies this year. Manthe ceremonies are a traditional welcome to country.

The Gija Traditional Owners perform Manthe with smoke while the Miriwoong Traditional Owners perform Manthe with water. The purpose of these ceremonies is to ensure the cultural safety of our employees during their time at Argyle.

Coming up in Q1 2025: What we are doing next

The Argyle CSP team will work together with Gelganyem Trust to gather items from the Argyle Village rooms and to distribute as gifts in Q1 2025.



Traditional Owner Businesses

What we did in Q4: September - December

Contracting achievement for Traditional Owner Business

Clay Rivers, a Traditional Owner and former Argyle employee, has achieved a significant milestone with his company, North Rivers Plumbing and Gas (NRPG).

Clay took advantage of Rio Tinto's Life After Argyle program, completed his plumbing contractor's license and established NRPG, securing initial contracts through Goring Jimbila Contracting (GJC) to provide sitewide plumbing and other related services for the Argyle Closure project. Piacentini and Son who are the primary bulk earthworks contractor for the project also engaged NRPG to support waste disposal as did Liberty Industrial during site demolition works.

As a part of the Argyle Closure project, Clay's perseverance led to NRPG's first direct contract with Rio Tinto.

'I would like to thank the Rio Tinto team for supporting me through this process and GJC for the opportunity at the very start that has helped my business to consolidate over the past few years,' said Clay. 'I need to call out Mika McLennon, MDM Mining & Civil and Dillon from DJ Rivers Electrical for their guidance, mentorship and support. Without people like them it would no doubt have taken me a lot longer to achieve this milestone considering I only started my business just over three years ago.'





Argyle Accreditation Project wrapped up in November

Delivered in partnership with Kimberley-based Djarango Training, the Argyle Accreditation Project concluded at the end of November.

The project provided the opportunity for Traditional Owner Businesses engaged at Argyle Closure execution to support their employees

to obtain Recognition of Prior Learning (RPL) to transfer their Verifications of Competency (VOCs) on various machines into Nationally Accredited tickets.

So far, 47 participants have enrolled in the program seeking a total of more than 90 tickets.



The Argyle Mine Closure Plan

What is it?

At Argyle, a Mine Closure Plan (MCP) was approved in 2014 prior to commencing closure in late 2020. The Argyle MCP describes how Argyle will be decommissioned, rehabilitated and relinquished to enable the land to be transitioned to the uses agreed with the post-mining land users - in this case, the Traditional Owners on whose country the Argyle diamond mine was located.

The most recent MCP for Argyle was submitted for consultation in October 2024 and supersedes the 2014 MCP and subsequent updates in 2018, 2021 and 2023.

The Argyle MCP addresses the closure issues identified by ADPL and its key stakeholders and details the proposed closure approach to all mining-related activities undertaken on the Argyle lease. This includes the alluvial, open pit and underground mining areas and all associated infrastructure, facilities and services.

What makes up the Argyle MCP?

DEMIRS have guidelines to support the preparation of a Mine Closure Plan. Included in the plan are:

- Scope & Overview
- Legal Obligations and commitments
- Stakeholder Engagement
- Post-mining land use(s) and Closure outcomes
- Development of Completion Criteria
- Collection and Analysis of Closure Data
- Identification and management of Closure Issues
- Closure phases
- Financial provisioning for Closure
- Management of Information and Data
- Once a MCP is approved it is made publicly available

What is a mine closure plan?

A mine closure plan (MCP) is a document that outlines the strategies and processes undertaken to safely and responsibly close assets that have reached the end of their operational life. An MCP is reviewed and resubmitted every 3 years and is considered a dynamic document that is refined over time, to ensure that it reflects the most current knowledge and up to date closure guidelines.



Guidelines and completion criteria

The December 2024 Argyle MCP has been prepared to substantially comply with the format stipulated in the Statutory Guidelines for Mine Closure Plans, version 4.0 (DMIRS, 2023) (Closure Guidelines) and where possible has attempted to align with the draft Guideline for Preparing Mine Closure Plans (DEMIRS, 2024).

The MCP also details closure outcomes (the overarching goals to be achieved across the whole of site, consistent with identified Post Mining Land Uses) and completion criteria (performance targets for each individual area of the mine) to be achieved before Regulators can approve lease relinquishment.

The completion criteria have also been the subject of ongoing review and update, informed by:

- Outcomes from the closure pre-feasibility and feasibility studies;
- Independent expert advice across a number of domains;
- Engagement with Traditional Owners, including by subject matter experts engaged by the Traditional Owners to provide technical advice and support during the MCP consultation process; and
- Consultation with relevant State Government departments and agencies.

If you would like to learn more about the Argyle Mine Closure plan, please contact the Argyle Closure CSP Team on enquiries.argylediamondmine@riotinto.com







Contact us

If you'd like more information or if you have any queries about the closure, please get in touch
enquiries.argylediamondmine@riotinto.com

Grievances and complaints phone number
1800 674 774

RioTinto