

RioTinto

# Argyle

Mine Closure

Updates on the  
Argyle Mine Closure

Issue 8  
Q1 March 2025

## Welcome to the eighth edition of the Argyle Mine Closure Newsletter

I would like to start by acknowledging the Miriwoong and Gija people from the seven Dawang/Daam groups who are the Traditional Owners of the Barramundi Dreaming – the Tiltuwam, Mandangala, Yunurr/Yalangga, Neminuwarlin, Balaburr, Bilbildjing and Upper Jimbila people.

We are continuing to share this quarterly publication with a broader external audience including Traditional Owners, local community stakeholders as well as regulators. We want to share our progress more broadly as we move into the last year or so of closure.

In December 2024, we submitted the 2024 Mine Closure Plan (MCP) to the regulators. On the opposite page is a snapshot of all the hard work that went into producing the Mine Closure Plan as well as the extensive body of technical work that supports the strategies it discloses.

My thanks also go out to the dedicated team of technical experts working for Rio Tinto and those we have funded as independent experts providing advice to Gelganyem and the Traditional Owners for their hard work.

We concluded our fourth revegetation season for the Argyle Closure project in January 2025. My thanks go out to our dedicated seed collection contract partners, Gelganyem Seed Operation (GSO) and Top End Seeds along with their teams as well as the Dendra drone seeding team and our site team who worked throughout some of the hottest conditions of the year to make this revegetation season a successful one. Read more on page 8.

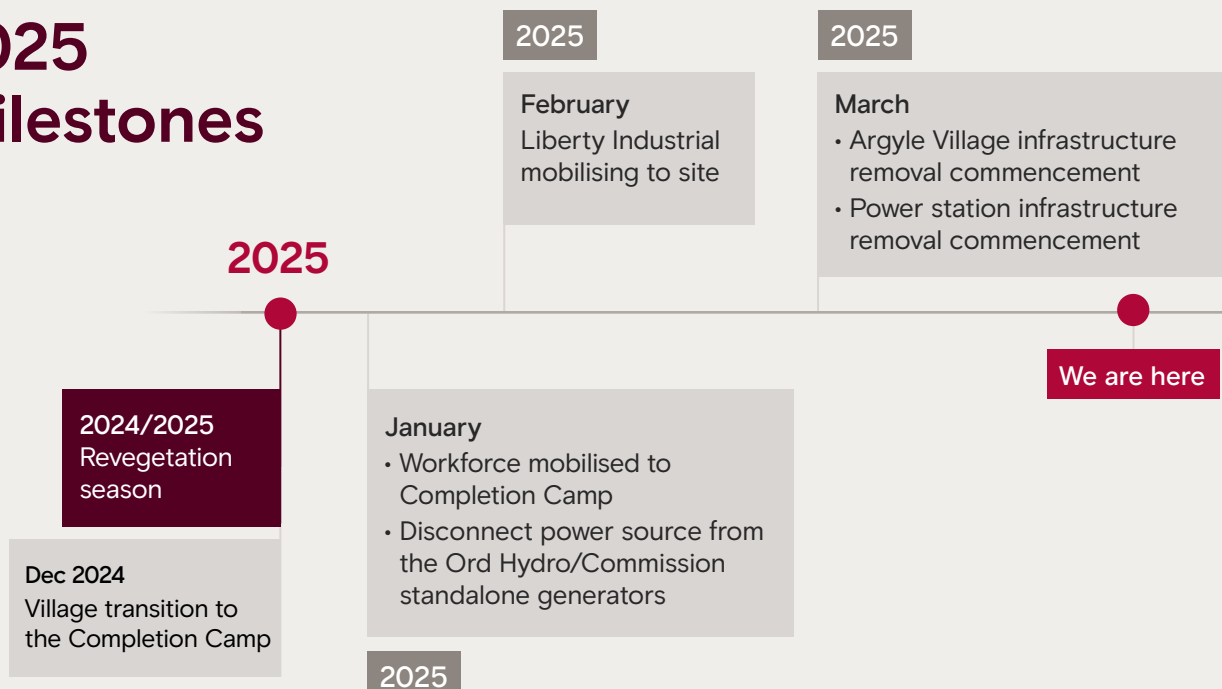
Our demolition contract partner, Liberty Industrial have mobilised back to Argyle and commenced work on the second phase of the infrastructure removal activities which include the Argyle village, power station, workshops, offices and airport.

There is a lot of activity under way on site to ensure the safe execution of the closure of Argyle. For more information, or if you have any queries, please visit our website – [riotinto.com/en/operations/australia/argyle](http://riotinto.com/en/operations/australia/argyle) – or contact us via the details provided on the back cover.



**Melissa Cundy**  
General Manager  
Argyle Closure

## 2025 Milestones



# Mine Closure Plan snapshot

**18 months**

in revision since June 2023 MCP

**81 appendices in total**

11 existing appendices updated, and 34 new appendices

**305 pages**

in the main body of MCP

**1.4GB document**

including appendices

**8,700+ revisions**

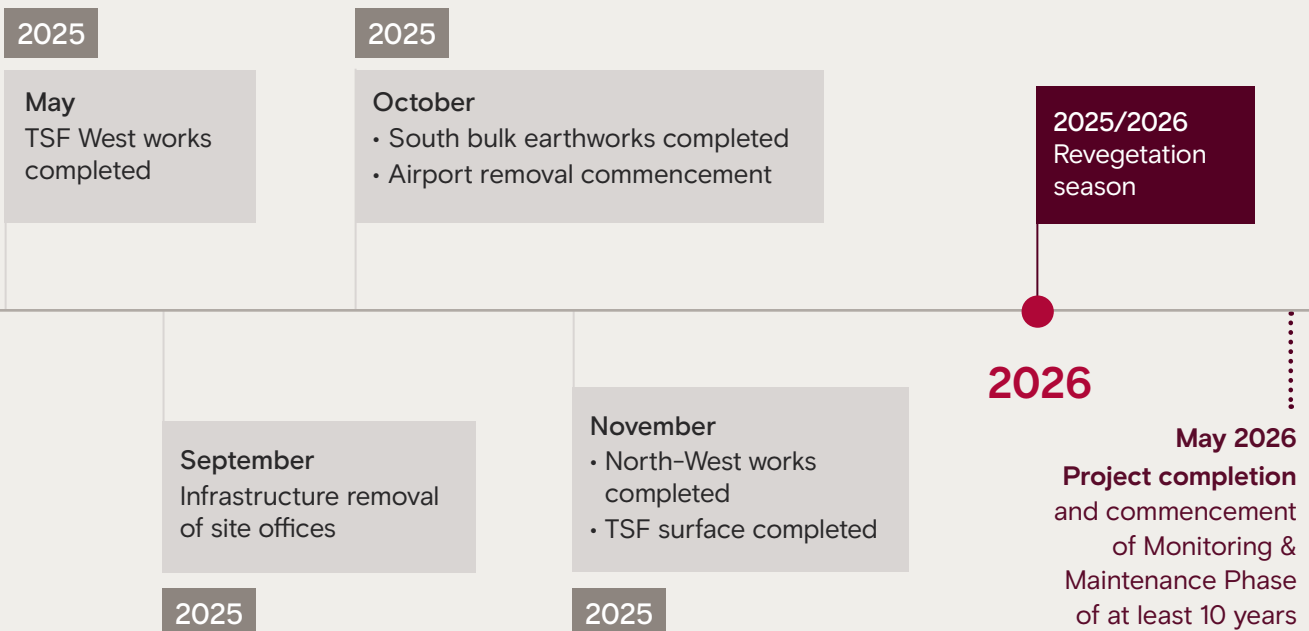
to the main MCP document

**56 engagement touch points since June 2023**

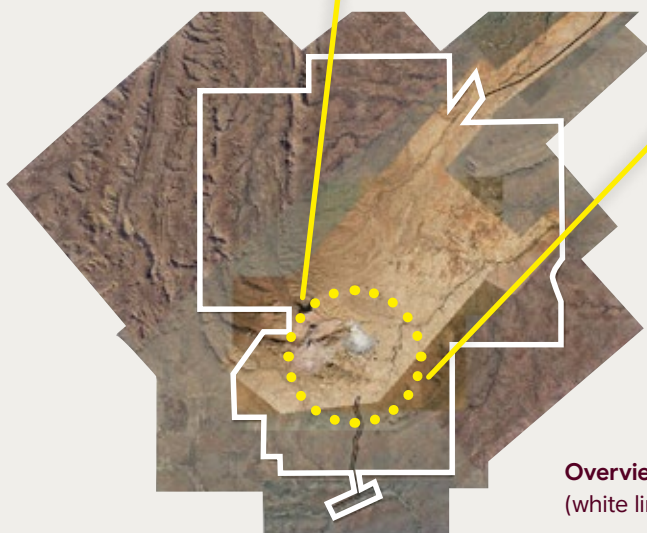
282 engagement touchpoints since 2003

**30,163 pages with appendices**

in the consolidated MCP



# Argyle Diamond Mine Closure Work Area Domains



**Overview** of total area of Argyle lease boundary (white line); yellow dotted line shows work areas

# Infrastructure

## What we did in Q1 2025

### Second phase of infrastructure removal commences

Liberty Industrial mobilised back to Argyle in February and commenced their first package of work for the second phase of infrastructure removal for the project, the make safe and demolition of the Argyle Village.



Liberty has awarded various packages of work to Traditional Owner Businesses to support with the next phase of infrastructure removal. These packages include water cart, ADTs, surveying, make-safe and isolations, waste disposal cell construction, landfill Capping, Alluvials capping and services removal.

We disconnected from the Ord River hydro scheme (Pacific Blue) mains power supply and everything on site is now being run from generators. This enables demolition of the power station and power infrastructure. We are working with PacificBlue on their proposal to retain their powerlines and infrastructure in the switchyard for potential future customers which they are discussing with Traditional Owners and Regulators.

## Coming up in Q2 2025 What we're doing next

Argyle village demolition will continue. Core shed will be demolished to allow bulk earthworks to continue in the South lower domain.



# Landforms



Above: Tailings Storage Facility (TSF), May 2023  
Inset: TSF, January 2025

## What we did in Q1 2025

### Tailings Storage Facility (TSF) Update

The TSF ramp 1 closed for the final time in late January to continue bulk pushing works on the main dam embankment. Excellent progress has been made so far with TSF West works continuing in the West Dam Embankment, bioremediation area and Light Industrial Area (LIA) valley areas.



Above: TSF surface, September 2023  
Below: TSF surface, January 2025





## Work progressed safely at Alluvials Tailings Dam 5 (ATD5)

The Project Delivery, CSP and the Goring Jimbila Contracting (GJC) teams collaborated to ensure the safety of culturally significant Boab trees while conducting works. The implementation of the Boab protection design needed a degree of flexibility to ensure that the trees were not damaged. The GJC and Rio Tinto teams worked together to ensure a successful result.

## GJC have commenced site access track rehabilitation works

GJC have also completed all SP1 rock placement in the drains of AK1 process area and successfully progressed 90% of backfilling vent shafts ES1 & 2.



## Coming up in Q2 2025

- Continuation of bulk earthworks in the North West Upper and on the TSF Main Dam Embankment areas.
- Completion of main spillway works
- Commencement of site access track rehabilitation works. There are more than 50 tracks that are set to be rehabilitated. Further investigations and reviews by Rio Tinto and the Traditional Owners are ongoing to confirm if rehabilitation is needed for all of these tracks.



# Environment

## What we did in Q1 2025

### Fourth revegetation season for Argyle Closure concludes in January

Our drone seeding contract partner, Dendra commenced seeding for the 2024/2025 revegetation season in late November.

Drone seeding commenced with the first lot of seed being spread on Wednesday 27 November.

The Dendra team successfully completed 267 ha of seeding for the year (against a target of 280 ha) in the South Waste Rock Dump (SWRD), North Waste Rock Dump (NWRD), Tailings Storage Facility (TSF) and AK1 Process plant areas.

Gelganyem Seed Operation (GSO), Top End Seeds (TES) and Gelganyem Technical Team visited site during the drone seeding and provided positive feedback on the rehabilitation progress from previous years and seeding performance.



*Smoke treating the seed simulates a bushfire, which triggers germination across a range of species*



*GSO and Dendra teams discussed effectiveness of improvements made to seed processing prior to this revegetation season, and what could be done to further improve efficiency*

**Snapshot** At the end of Q1 2025, the 2024 rehabilitation season came to a close with these completed rehabilitation outcomes:

Total rehabilitation

**262 hectares** of seeded rehabilitation

**3ha**  
of direct return topsoil

**174ha** of weed controlled historical  
and naturally recruited rehabilitation

## Coming up in Q2 2025

- Seed collection including closing out the grass seed collection
- Weed control in Rehabilitation Areas and along Creek lines
- Drainage, bund and erosion visual inspections
- Quarterly remote monitoring equipment inspection and maintenance
- 2025 Half 1 Pit Lake Monitoring
- Post-wet season ground water and surface water sampling

# Communities



## What we did in Q1 2025

### Village gifting program

The Argyle Closure CSP team, with the support of Contract partners Liberty Industrial and MDM Mining & Civil, gathered items from the decommissioned Argyle Village to be gifted. These items will be sent to Gelganyem to be distributed to the Traditional Owners as a part of the gifting program.



## White Card Courses delivered to Traditional Owner Businesses on site

TAFE training for White Card delivered on site during the last week of February for all Traditional Owner Businesses that needed to obtain the qualifications.

## Coming up in Q2 2025

- Annual Fish Sampling Trip
- Heritage Survey

# The Argyle Closure Revegetation Plan

The below feature is a summary of the revegetation strategy that has previously been presented to stakeholders. The revegetation strategy is continuously evolving and updated based on stakeholder feedback including the independent expert reports received from Gelganyem and Traditional Owners.

Rehabilitation and revegetation are critical processes in the lifecycle of a mining operation, to ensure the disturbed land is restored to a stable state. Rehabilitation refers to activities such as reshaping landforms and placing rock armouring material and/or growth media to stabilise the land and prepare for plant growth. Revegetation is the process of re-establishing vegetation cover and helps stabilise the soil, prevent erosion and create a habitat for wildlife.

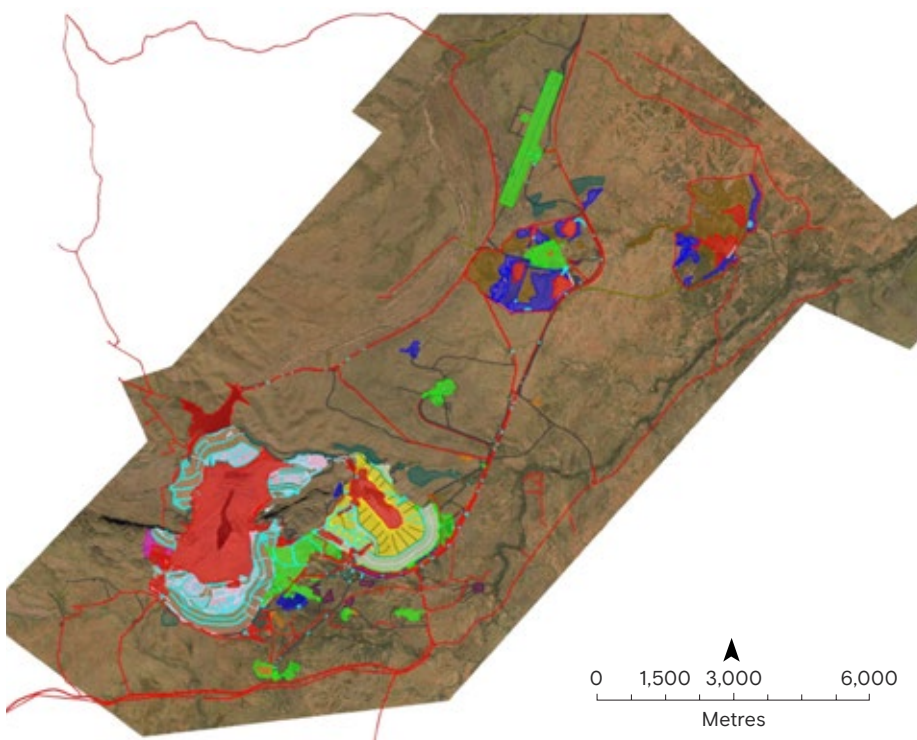
The Argyle Diamond Mine Closure revegetation plan outlines the strategy for restoring vegetation in disturbed areas. It details the steps needed for each area, from shaping the land to spreading of native seeds. The plan also includes separate guidelines and references for monitoring, reporting, maintenance, and remedial works.

The disturbed areas across the Argyle lease which are being revegetated are:

- Waste Rock Landforms (WRLs)
- AK1 Tailings Storage Facility (TSF)
- Alluvial Mined Areas (AMAs) and Alluvial Tailings Dams (ATDs)
- Infrastructure areas including plant, buildings, airport, landfills, roads and tracks

Each of these areas are further divided into smaller sections (known as precincts) based on how the land was used during mining (i.e. the disturbance purpose) and the features of the original landscape and how the land will be rehabilitated. Some examples of the features which helped define the precincts are: soil type, vegetation community, topography and terrain (rocky, hills, flat low-lying areas) and proximity to water. The precincts include:

- Hillslopes (hills and slopes)
- Plains (flat areas)
- Dams
- Drainage lines
- Infrastructure areas
- Roads
- Landfills



## Argyle Diamond Mine Rehabilitation Precincts Overall

- Drainage Lines
- Hillslopes - Slope
- Hillslopes - Slopes Rework
- Hillslopes - Flat
- Hillslopes - Flats Rework
- Footslopes
- Plains
- Alluvial Mined areas
- Dams
- Shallow Mix
- Landfill
- Exclusion zone
- Borrow
- Infrastructure
- Road
- Roads Post Closure
- Service Corridors
- Historic Rehab - Weed Management

This approach helps blend the final (rehabilitated) landform into the surrounding natural landscape.

Specific rehabilitation measures, called prescriptions, are developed for each area based on the disturbance purpose, past research, studies and trials and stakeholder consultation. These approaches include:

- Weed control and grubbing – Removing weeds.
- Reshaping the land – Slopes reshaped to a maximum of 20 degrees to blend in with the surrounding natural landscape and assist with stability, effective drainage and vegetation establishment
- Different ripping techniques such as shallow ripping, decompaction ripping and deep ripping
- Adding different soil types to support plant growth such as rock armour, direct return topsoil and subsoil growth media
- Seeding – spreading seed manually, with drones or earthworks equipment
- The use of specialised seed mixes suited to the area
- Infill planting – tubestock seedlings planted manually.

### Expected activities during the monitoring & maintenance phase

- Ongoing weed management will be required throughout monitoring and maintenance.
- Rehabilitation (revegetation, weed, fauna and erosion) monitoring.
- Rehabilitation rework supported by seed collection (and ongoing storage) and earthmoving equipment for areas not on track to meeting completion criteria during the monitoring period.
- Maintenance activities to protect and access the revegetation including road and track maintenance, fire breaks, and fence repairs.
- Onsite support for monitoring and maintenance contractors (access, escorting and support).

## Seed mixes



Two primary seed mixes have been developed to be used across different areas:

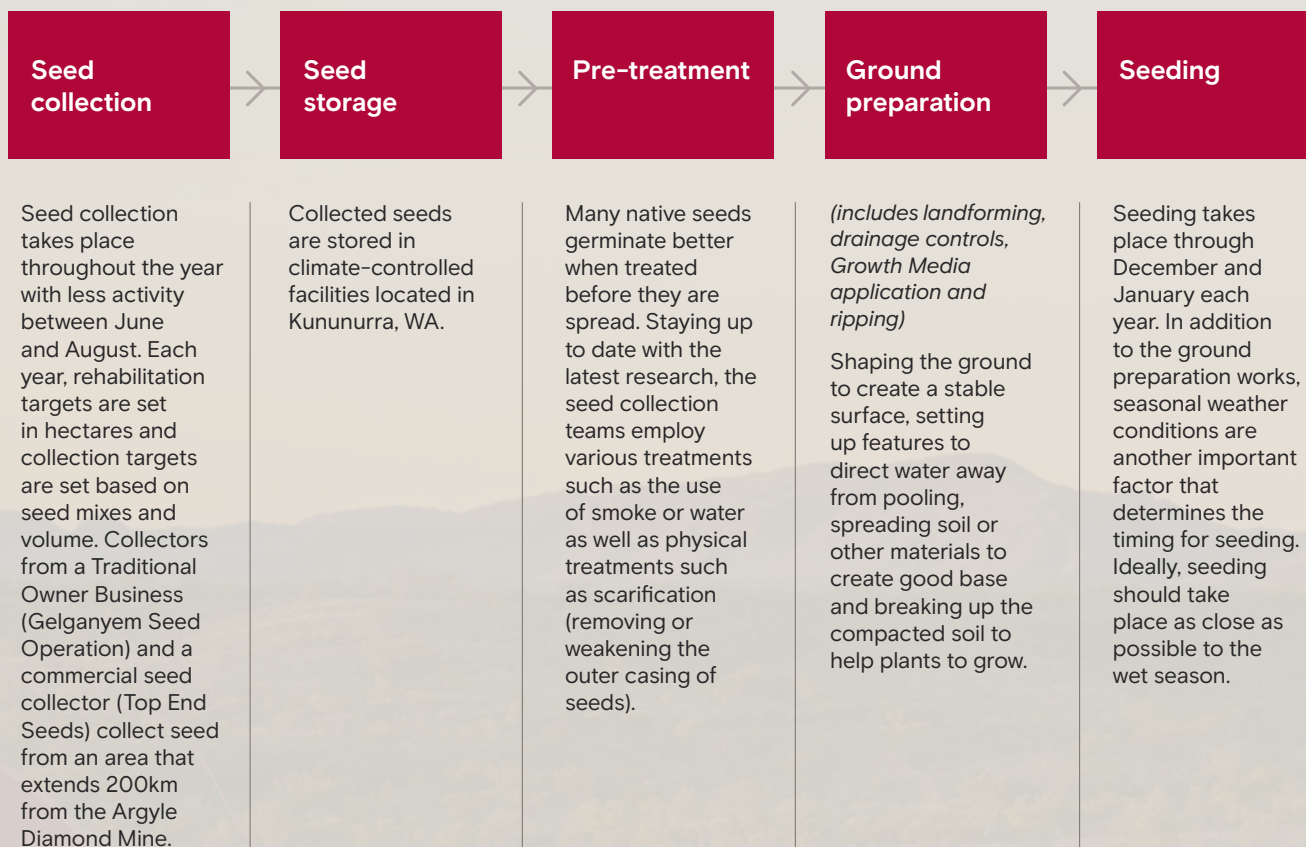
1. Hills and elevated zones mix
2. Plains and depositional zones mix

These mixes were developed using a list of plant species from both natural and rehabilitated areas across Argyle. They are designed to match the types of plants like trees and grasses, that grow in similar landscapes and are based on what we have learned from rehabilitation monitoring, engagement with Traditional Owners and the

expertise of local seed collectors and technical experts. Seed species such as plant species known to be used for bush tucker and medicinal purposes have also been included in the seed mixes were also included as advised by the Traditional Owners.

The seed mixes include a comprehensive list of species with the ability to customise mixes based on the specific areas, such as a 'shallow root' seed mix used on some embankments and the landfills, and a 'drainage' seed mix used in some lower laying wetter areas.

## From a seed to a plant - what a revegetation season looks like



### Contact us

If you'd like more information or if you have any queries about the closure, please get in touch [enquiries.argylediamondmine@riotinto.com](mailto:enquiries.argylediamondmine@riotinto.com)

Grievances and complaints phone number  
1800 674 774