

Pannawonica Town and Robe Valley

Pannawonica was established 40 years ago and today has a population of approximately 800 people. Built to house the workforce and families of the nearby Robe River Iron Associates mines, all company homes are air-conditioned and residents enjoy a relaxed casual lifestyle.

The town has a well equipped primary school as well as a day care centre and playgroup. The medical centre has a Doctor available five days per week. The town's facilities include a post office, library, supermarket, Deli, tavern and hotel, sporting club, bank agency and a service station. The public swimming pool is a popular spot during summer, as is the open air cinema. Both are free of charge.

For Pannawonica visitors, accommodation may be available from Rio Tinto village facilities or alternatively at the powered, four bay caravan park with grassy camping sites.

The highlight of the year is the Robe River Gala where the whole town turns out for a weekend of activity, including the social event of the year the Gala Ball held in July each year.

The Rodeo is the only event of its kind in the Pilbara and is well supported by the local community and pastoral properties, with competitors and visitors coming from across the State for this spectacular event. This event is held on the first weekend in September.

In 2009, a \$250 million town renewal project was announced to give the whole town a facelift - refurbishing all 230 houses and upgrading community and commercial infrastructure. This project was completed in 2012.

Yannarie Park





Pannawonica

Robe Valley Operations produces 32 Mt/a of iron ore from the two sites which comprises approximately 25 million tonnes of Saleable Ore Product (SOP) from Mesa A and 7 million tonnes of SOP from Mesa J. This iron ore product is loaded onto dedicated trains for transport to the port for further crushing and screening and stockpiling at Cape Lambert operation (200 kilometres to the north-east) prior to ship loading and export.

The two operations are approximately 50 kilometres apart and whilst there are some personnel that work across both sites, employees primarily work at one particular site. Mesa J (which has a number of pits including Mesa K) has high grade ore from the pit but also processes low grade ore through two processing plants with the resultant product being delivered to the train load out. Mesa A does not have a process plant with all run of mine (ROM) ore being passed through primary and secondary sizer prior to being stockpiled at the train load out.

Rio Tinto manages the Robe Valley operations and Pannawonica town on behalf of the Robe River Joint Venture Participants.



Iron Ore

Emergency telephone numbers

Dial 000

(ask for Pannawonica Fire, medical or police)

Police

The station is located on Pannawonica Drive and attended from 8am-4pm on weekdays.

Licensing requirements are only conducted on Thursdays.

Phone: 9184 2444 Pannawonica

Fax: 9184 1022 Pannawonica

Karratha Police: 9143 7200

Road Conditions: 13 81 38 or 1800 013 314
(Not police station)

Main Roads – Gascoyne.....9941 0777

Main Roads – Pt Hedland9172 8877

E-mail pannawonica.police.station@police.wa.gov.au

P.O. Box 281, Pannawonica 6716

If the police station is unattended, the call will be diverted to Karratha.

Fire Brigade - Pannawonica Alarm..... 000

Advise the service you require i.e. Fire Brigade and they will connect you. Be sure to state where you are calling from and your name. This procedure needs to be followed to advise particulars of the fire.

After hours medical service 000

To call the nurses for an **after hour emergency only**, follow these instructions:

Phone **000** and tell the operator that you require the Pannawonica Ambulance and they will put you through to the nurse.

Please be patient and wait for the connection to be made. It can take a couple of minutes.

There is an emergency telephone outside the Medical Centre, which can be also used. Just follow the instructions on the wall next to the phone.

Advise the nurse when you call:

- Your name
- The patient's name
- The problem
- Your location

Health Direct: 1800 022 222

(24 hours a day, seven days a week)

All calls are answered by qualified and experienced nurses with additional training in telephone triage. The goal of telephone triage is to recommend an appropriate level of care (disposition) within an appropriate timeframe, and to provide advice where required. Dispositions range from immediate transfer to hospital via ambulance (with advice on care for the patient until the ambulance arrives) to reassurance and advice on home care. Telephone triage is not a diagnostic service; rather, it is designed to provide recommendations and help callers make informed decisions.

Nickol Bay Hospital (Karratha): 9143 2333

Cyclone Information

The Bureau of Meteorology cyclone information service is contactable on 1300 659 210.

The Rio Tinto employee cyclone hotline is 1800 992 777.

Building Maintenance Emergencies

Contact the Pilbara Service Desk1800 992 777

Medical & Crisis Support Services

Pannawonica Medical Centre

Phone:9184 1586

Fax:9184 1592

Monday to Friday0800 – 1700

EFTPOS Available

The Medical Centre is open Monday to Friday during the above hours, and is staffed by two Registered Nurses. No appointment is necessary.

Doctor

There is a Doctor on site five days per week. Appointments are necessary and can be made at the Medical Centre (hours and days are subject to change due to Doctor availability).

Please book early if you know you need to see the Doctor for matters such as pap smears, vaccinations, overseas travel and life insurance medicals, etc. If you require a longer consultation i.e. a medical or more than one problem, please advise the receptionist when making the appointment. Bulk billing is also available.

Please be aware that you may need to travel for x-rays, other tests or for further management, as this is a remote area.

After hours medical advice

After hours medical advice can be obtained from hospitals in Karratha and Wickham.

For general medical advice please use the following numbers:

Nickol Bay Hospital (Karratha)..... 9143 2333

Wickham Hospital 9187 3200

Health Direct1800 022 222
(24/7 Health Advice)

Note: Many health insurance funds have dedicated advice lines, please check with your fund.

After hours emergency arrangements

In an emergency you can always get medical attention by phoning the after hours nurse.

Please dial **000** and ask for the Pannawonica Ambulance and you will be put through to the nurse on call.

Please be aware that a \$200 service fee may apply to non-emergency call-outs. This will be at the discretion of the Medical Centre.

Immunisations

Childhood immunisations are conducted each weekday during surgery hours.

Child health nurse

The child health nurse visits the Medical Centre fortnightly. Please phone for an appointment.

Visiting health services

From time to time, other health providers will visit Pannawonica i.e. Podiatrist, Audiologist, Physiotherapist, Speech Therapist. Please contact the Medical Centre for their timetable.

Rio Tinto Employee Assistance Program (EAP)

EAP offers assistance to employees and their immediate family members. EAP visit Pannawonica Medical Centre every Wednesday by appointment. You may also have a consultation by phoning 1300 360 364.

Notices will be displayed outside the Medical Centre and Shopping Centre and also placed on PERIS, a local information service, to keep you informed as to these visits. Appointments can be made through the Medical Centre.

Medical Services Continued

Pharmacy

The Medical Centre carries a reasonable stock of pharmaceuticals, which can be purchased from the Medical Centre. Other items can be ordered via Pharmacy Help in Karratha on 9185 1316.

Cash, cheque, credit card or Eftpos transactions can be used for purchase of pharmacy goods. But credit is not provided.

Pannawonica is in a remote location. We suggest that you purchase a first aid kit. If you have children, please keep a supply of Panadol and a thermometer. Membership to St Johns Ambulance is recommended.

Dentist

Nickol Bay Dental Clinic9144 1470

Suite 28, 2608 Sharpe Avenue,
Karratha Village

Monday to Friday 0830 – 1700
Saturdays by appointment only.

Karratha Dental Centre 9185 5600

Shop 5, 16 Headland Place, Karratha

Monday to Friday 0800 – 1700
Saturdays by appointment only.

Other Services

- Counselling referrals
- Mental health nurse or clinical psychologist – visits weekly from Karratha.
- School health nurse visits school Thursdays.
- AA information and contacts for support people
- Videos and books for loan

Salvation Army Women's Refuge

Accommodation for women and children up to 14 years that are victims of domestic violence

Phone: 9185 2807

Fax: 9185 4818

Crisis Care

24 hour telephone service9223 1111

Society of St Vincent De Paul

Welcome Road

Karratha 9185 4336

Department of Child Protection Services

Crisis Care 1800 199 008

Health Direct 1800 022 222

Family Help Line1800 643 000

Beyond Blue 1300 22 4636

Gamblers Anonymous (08) 9487 0688

Alcoholics Anonymous (08) 9325 3566
or (08) 9325 3209

Government and Shire information

Shire of Ashburton

The Pannawonica Library offers Shire services including dog registration, caravan park bookings and Citizenship ceremonies. The library also is responsible for issue of Millstream Access Road Permits. Please contact the library or Shire for more information.

Local Shire Office
Pannawonica Library
Pannawonica Road

Phone: 9184 1038

Fax:9184 1119

Monday – Friday 1000– 1600

Tuesday 1000 –1600 & 1830 – 2030

www.ashburton.wa.gov.au

Dog registration

Licensing of dogs over the age of six months can be done at the Pannawonica Library. By law all dogs must be registered and wear an identification disc.

Dogs in public areas must be kept on a lead. Dog poo bags are available on site. No more than two dogs over the age of three months may be kept at one premises, without Shire approval.

Dogs are not permitted in public buildings or places where food or drink is prepared or exposed to sale to the public.

Complaints regarding animals require three people not living at the same address to complain to the Shire.

Ranger service

The Shire of Ashburton employs three full time rangers who are based in Tom Price, Paraburdoo and Onslow. Rangers are Municipal Law Enforcement Officers who are responsible for enforcing laws about litter, dog and cat control, vehicle offences, bush fires and other local shire laws.

Senior Ranger 0457 000 283 (24 hours)

Tom Price9188 4459

Paraburdoo9189 5402

Onslow9181 3301

.....or 0417 949 616 (B/H only)

Justice of the peace

For further information on Justice of the Peace visit:

www.justice.wa.gov.au

Vehicle and driver licencing

Pannawonica Police9184 2444

Pannawonica Drive

Online visit: www.transport.wa.gov.au

General information and facilities

Air strip

A gravel airstrip for Company use only is located on Deepdale Drive one kilometre North of Pannawonica.

Town accommodation office

Situated to the rear of the Pannawonica mess. All site bus and accommodation bookings are made through this office.

Phone: 9159 3340
Monday – Sunday 0800 – 2000

ANZ bank agency

Located in the supermarket.

Phone: 9184 1174
Monday and Wednesday 1100 – 1500
Tuesday, Thursday and Friday 1330 – 1700

Bush fire control and fire rescue

Restricted Fire Season runs all year with Fire Permits required at all times. Please contact FESA.

Pannawonica bus services

Bus Services operate daily to Mesa J, Mesa A and Karratha Airport–Timetables may be obtained from the Accommodation office.

Transit park

Powered transit sites are available at the town oval with fully serviced amenities blocks adjacent to the bays. There is a nightly cost payable to the Pannawonica Public Library. Maximum stay is three nights.

Church services

Catholic Church - Sports Way

Catholic Mass is held monthly. Notices are placed on the town notice boards advising of dates and times.

Cyclone information

The Cyclone season extends from November to April. A cyclone clean up is undertaken prior to cyclone season and these dates are advertised.

Rio Tinto employee cyclone hotline 1800 201 111.
Bureau of Meteorology cyclone service...1300 659 210
The Bureau of Meteorology – www.bom.gov.au

Deli

An extensive range hot and cold beverages, takeaway food, ice-creams, confectionary is available.

Phone: 9184 1191

Monday – Sunday 0700 – 1700
(including public holidays)

Pannawonica mess

Current opening hours are:

Breakfast buffet 0400 - 0800
Evening dinner 1630 – 2030
Crib selection – day shift 0400 – 0800
Crib selection – night shift 1630 – 1830

Drive in/Walk in theatre

We provide an open air theatre that screens movies on Friday and Sunday nights at 1930. Admission is free. Notices are distributed and displayed on the digital display board at the kiosk before the weekend advising of movies to be screened. The theatre will be closed if there is a risk of thunderstorms.

Eftpos

EFTPOS facilities for the town residents can be accessed at the Tavern, Deli, Post Office, Service Station and Supermarket. An ANZ agency operates from the Supermarket. Cash withdrawals are available on cheque and savings accounts.

Employment

To find out about employment opportunities within the town and mines please refer to Rio Tinto, ISS or Spotless career websites.

Gymnasium

The Lifestyle Centre is located on Pannawonica Drive next to the Supermarket complex. The gymnasium office and cardio equipment are in this building with the weights room located at the north end of the mess. It is open 24 hours a day, seven days a week and is accessed using a code supplied by the Health and Wellness coordinator. Rules included for your safety are:

- All new members must be assessed by the Health and Wellness coordinator. Please make an appointment by calling 9159 3277.
- All users must wear correct footwear and utilise a gym towel.
- Management accepts no responsibility for injuries sustained whilst using the gym equipment.
- No alcohol is allowed in the gym area.
- The gym is not to be used by patrons who are under the influence of alcohol

Library

Pannawonica Drive

Phone: 9184 1038

Fax:9184 1119

Opening Hours:

Monday 1000 –1600

Tuesday1000 –1600 and 1900 – 2100

Wednesday1300 –1600

Thursday1000 –1600 and 1900 – 2100

Friday 1000 –1300

The Pannawonica Library has a large range of fiction and non-fiction books, videos, DVDs, CD ROMs and audio books for all ages. Items are loaned out on a fortnightly basis and extensions of this time frame are available upon request.

In addition the following services are available at the Library:

- Photocopying and printing
- Faxing
- Laminating
- Public access computer – bookings required.

Pannawonica Sporting Club

The club is open to all members of the community. Membership is required to enable you to attend the premises. Memberships are available at the bar.

The club is available for use for barbeques, parties and meetings. Bookings can be made by contacting the club.

Phone:.....9184 1297

Operating hours are advertised at the club

PERIS

Pannawonica Event & Retail Information Service.

If you would like to know what is going on in Pannawonica just register your email address with PERIS at PERIS@westnet.com.au

You will receive informative emails from various organisations and retailers in Pannawonica, telling you the latest events and purchasing information available. Your details will be kept private and confidential.

Parks/ovals and reserves

The following recreational facilities are available in Pannawonica.

- Town sports oval and playground
- Yannarie Park sports precinct and skate park
- Tony Lyons Park
- The Rocks

Post office

The Post Office is located in town next to the Supermarket. The Post Office is an agent for the Commonwealth Bank as well as offering postal services. A small range of stationary and gifts are also available.

Phone:..... 9184 1011

Monday – Friday 1000 – 1630

Tuesday 1000 – 1800

Access to private post boxes is available 24 hours a day.

Public telephones

Located at the Barry Lang Car Park on the corner of Pannawonica Drive and Deepdale Drive.

Robe River Rodeo

The annual Robe River Rodeo is held in September each year at the rodeo grounds located approximately three kilometres South-East of town.

The Rodeo is held over two days -Friday with a Camp Draft and Saturday the Rodeo. Each evening there is entertainment provided by a band or other entertainment.

The Rodeo is run by a volunteer committee consisting of enthusiastic community members.

For information visit www.pannawonicarodeo.com.au

Clean up Australia

Every year the Pannawonica Community come together to clean up Australia Day.

NAIDOC Day

Kuruma Marthudunera who are traditional owners of the Pannawonica region celebrate NAIDOC Week annually with the Pannawonica community.

Gala weekend

Gala weekend is usually held in July. The weekend consists of a themed ball and a country fair.

City to Surf Fun Run

This is an annual event that runs in conjunction with the Gala weekend.

Royal Flying Doctor

Pannawonica supports the Royal Flying Doctor for more information on this service visit www.flyingdoctor.net

Rubbish tip

The rubbish tip is located out of town follow the directions in the residential rubbish disposal guide in this publication.

Service station

Open for fuel, parts, and incidental purchases.

Phone: 9184 1044

Monday to Friday.....0730 – 1700

Thursday 0730 – 1900

Saturday 0730 – 1300

Sunday 1000 – 1400

Spinifex restaurant

Located in the kiosk at the Drive In.

Take away meals, burgers, fish and chips, pizza, roast chickens and more are available for dinner most nights. Phone orders are most welcome and it is a good idea to order ahead on Drive-In movie nights.

Phone: 9184 1777

Thursday – Sun 1630 – 2030

Sports courts

The following sports courts are available in Pannawonica:

- Squash courts – key available from Commercial Services by contacting 1800 992 777
- School tennis courts
- Yannarie Park multi use court facilities
- Pannawonica Community Hall

Supermarket

A full range of groceries, fresh fruit/vegies, deli meats and fresh meat, packaged liquor sales is available.

Monday - Saturday.....0900 – 1700

Sunday100 - 1400

Swimming pool

Situated behind the Community Hall, Pannawonica Drive. Children must be accompanied by an adult and no alcohol or glass is permitted.

Phone: 9184 1296

25 metre swimming pool, free electric barbeques, change room facilities

Summer Hours: 1 October – 30 April

Monday – Wednesday and Friday-Sunday

0700-1230 and 1400-1900

Tuesday-Thursday and Saturday

0800-1230 and 1430-2000

Winter Hours: 1 May – 30 September

Monday– Sunday 0900-1300 and 1400-1700

Tavern, restaurant and TAB

The Pannawonica Tavern is located on Pannawonica Drive.

Phone..... 9134 9300

Tavern hours:

Monday – Friday1200 – close

Saturday 0900 – close

Sunday 1200 - 2200

Restaurant hours:

Lunch.....1200 – 1430

Dinner 1800 – 2200

Last orders 2000

TAB facilities are located in the public bar. This bar operates under the Liquor Licensing Laws and Responsible Service of Alcohol practices.

We also have a family friendly A La carte Restaurant, with Al Fresco dining area.

We promote safe and responsible use of alcohol and a self-test breathalyser is available in the dry mess front entrance area. We encourage you to consume alcohol responsibly and self test prior to departing for work or driving your vehicle.

For your safety and the safety of others, you are unable to take alcohol to the gym, pool, recreation rooms or sports court in the village areas.

Telecommunications

Telstra is the sole provider in Pannawonica

www.telstra.com.au

Free Internet and phone services are available in single persons quarters (SPQ) accommodation.

Television

Free to Air ABC, SBS, WIN, and GWN are available to houses and SPQ.

Town office –facilities management

Rio Tinto and its contractors are responsible for the maintenance of the town facilities. For maintenance/repair requirements on your property please contact the Pilbara Service Desk on 1800 992 777. Your call will be logged and forwarded to the relevant department for action.

The service operates between 0700-1700 Monday to Friday.

Critical jobs only can be logged outside of these hours.

Vet clinic

The Karratha Veterinary Clinic visits monthly. For all appointments please contact them on 9185 1600

Watering and gardening

Water usage is to be in accordance with the Water Authorities regulations. Sprinklers can only be used between the hours of 1800 and 0900 on your watering days are listed below.

Odd numbered houses - odd days of the week

Even numbered houses - even days of the week

It is recommended that sprinklers are to be used no more than 15 minutes per station.

Education and childcare facilities

Pannawonica has a modern, well-equipped and fully air-conditioned Primary School.

As there is no high school facility in Pannawonica, secondary students are required to attend boarding school. A company bursary scheme operates for our employees that assist children at boarding school.

Application for the bursary scheme is available from Human Resources. There is also a Government subsidy available – Isolated Children's Subsidy. This is administered via Centre link – contact 13 23 18.

Pannawonica Primary School..... 9184 1172

Pre Primary..... 9184 1172

Ashburton Way
Timetable – as per primary school.

Kindergarten 9184 1172

Ashburton Way
Monday – Thursday 0830 – 1130.

Parents and Citizens Association (P&C)

The P&C meet monthly. Any interested parents are invited to attend. Please contact the school for meeting times.

Pannawonica Occasional Child Care Centre Inc 9184 1391

13 Ashburton Way
Monday to Friday

The centre caters for children from zero to six years. Please bring along a drink, hat, lunch and a piece of fruit. Weekly programmes are run that focus on selected learning/motor skills for children of all ages.

Pannawonica Playgroup 9184 1371

Neighbourhood Centre, Pannawonica Drive
Monday, Wednesday and Fridays 0900 – 1100

This is a community run playgroup that offers a fun, friendly run environment for children aged zero to four years. Please bring along a piece of fruit (for morning tea), drinks and a hat. Children should dress in old clothes as they can get messy.

Pannawonica Kindy Gym Inc 9184 1540

Community Hall
Thursday Mornings.
Session 1 one and two years 0900 – 0945
Session 2 three and four years 1000 – 1045

Kindy Gym offers a fun and safe environment for children, that helps their coordination and motor skills.

Residential rubbish disposal guide

Pannawonica Rubbish Tip is located six kilometres from the town site drive along Deepdale Drive past the Rodeo Grounds. To get there, cross over the railway line and drive past the old Deepdale mine site until you arrive at the tip. Visitors are advised to drive to conditions and obey safety signs on the gravel access road.

The tip facility is manned and all visitors must report to the site office before proceeding to the dumping area. All visitors must fill in a waste disposal form prior to proceeding to the tipping area.



Opening Hours:

Monday to Sunday0730 – 1700
Dumping outside of these hours is prohibited.

The tip is licensed to accept:

- Bio degradable waste, such as food, municipal, office and non chemical waste
- Clean fill
- Green waste
- Building and demolition waste
- Asphalt waste
- Asbestos waste

Disposal areas are clearly marked.

Dumping of asbestos waste is by arrangement with the tip manager or Commercial Services coordinator only. Asbestos must be disposed off in accordance with the Asbestos code of practice.

The tip is not licensed to accept:

- Hydrocarbon waste products - Disposed of at Mesa J, Mesa A or the town hydrocarbon waste facilities (located at the Service Station, cnr Deepdale Drive and Pannawonica Road). Waste hydrocarbon products disposed at the Town facility must be placed in the designated waste containers
- Mine Site vehicle tyres are disposed of at Mesa J mine site
- Car bodies – Contact the EMOs for advice on car body disposal
- Hazardous waste - Chemical/liquid waste
- Car batteries – Car batteries can be disposed of at the service station
- Work units should arrange recycling of products such as wooden pallets, scrap metal, chemicals and paper waste
- Medical waste.

For assistance with the disposal of items not listed please contact:

Pilbara Service Desk1800 992 777

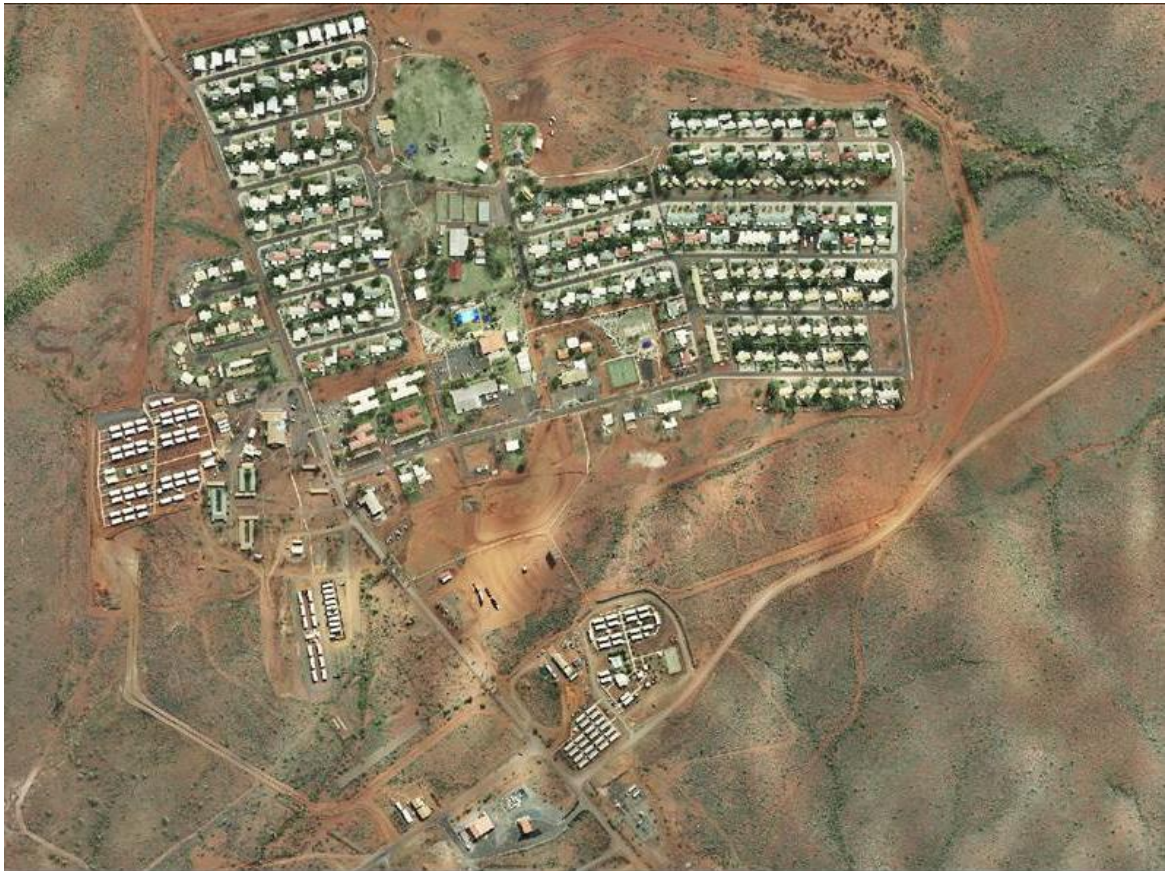
Pannawonica Town Domestic Rubbish Collection Schedules

The general household rubbish collection days are **Tuesday** and **Saturday**. NOTE - Each household is provided with one green Sulo wheelie bin.

Commercial areas rubbish collection – **Daily pickup**

There is a once only verge collection per year comprising of a pre-cyclone pick up that will occur late October. A notice will be sent a couple of weeks prior. It is a tenant responsibility to take all other non-household rubbish to the tip during the year. This includes items such as green waste, white goods, old furniture or items too big to place in the rubbish bin.

Pannawonica town map



Further Information

Information featured in this section has been kindly provided by the Shire of Ashburton.
For further information please visit the Shire website:
www.ashburton.wa.gov.au